

Report Number 0-110-007

Summer Institute in Environmental Education

Summary Report



Prepared by:
Kimberly Childs
Summer Institute Coordinator
September 2001

Introduction

The Summer Institute in Environmental Education was initiated in 1996 by the Centre for Forest and Environmental Studies. It has continued to be a success with teachers from all across the province attending in 1998, 1999, 2000 and this year. This years institute was a complete success. The following introduction was taken from 1999 report written by Martin Von Mirbach. It outlines the institutes goals and methods of teaching.

Goals: The Summer Institute provides participants with:

- an enhanced understanding of boreal forest ecology
- up-to-date information about resource management issues and strategies; and
- curriculum tools to enable them to apply these learnings in their educational activity.

Core Client base: Most participants are full-time teachers working at the primary or secondary school levels in Newfoundland and Labrador. The Summer Institute is designed to be applicable to teachers working in a wide variety of fields, including the sciences, social studies, arts, fine arts and learning resources.

Methods: The Summer Institute employs a number of important methods in achieving its goals.

- It works with a small group of participants, typically 15-25 people, who stay together throughout the institute, building team cohesion.
- It provides participants with access to a wide variety of resource people, including educators, resource managers, and other interests.
- It takes place in an outdoor setting and shows by example how outdoor education can be a powerful tool to enhance students' appreciation for and understanding of the natural environment, sustainable development and sustainable forest management.

Key Information about Summer Institute 2000

Date: August 19 -24th, 2001
Location Killdevil Camp and Conference Centre, Gros Morne National Park
Facilitator Dan Murphy, Outdoor Education Coordinator
Sheila Robinson, Communications Specialist, WNMF

Resource People

Malcolm Turner	Killdevil Camp
Dave Morrow	Gros Morne National Park
Keith Byrne	C.C. Loughlin Schoolyard Naturalization
Harvey St. Croix	Newfoundland Power
Lucy O'Driscoll	Wildlife Division, Department of Forest Resources and Agrifoods
Cecil Lake	Envirothon
Don Downer	ACRE Centre
Ron Burton	Department of Fisheries and Oceans
Jim Taylor	General Manager, Western Newfoundland Model Forest
Sean Dolter	Integrated Resource Management Planner/Specialist
Chris Callihan	
Nelson and Sarah White	Entertainment
Karen O'Neil	Multi Materials Stewardship Board
George VanDusen	Corner Brook Pulp and Paper Limited
Wayne Brown	Corner Brook Pulp and Paper Limited
Anne Hollihan	Corner Brook Pulp and Paper

Coordinator

Kimberly Childs

Camp Faciliator

Diane Hawco

Killdevil Staff

Malcolm Turner, Gerry, Sid, Ina, Bella, Linda

Sponsors

Western Newfoundland Model Forest
Corner Brook Pulp and Paper
Abitibi-Consolidated
Department of Forest Resources and Agrifoods
Newfoundland Power
School District Three
Department of Fisheries and Oceans
Newfoundland and Labrador Teachers Association

Participants



Front Row (L-R) Jan Bailey, Tracey Pretty, Cindy Barker, Yolanda Collins, Vanessa Payne, Kristy Hewitt, Lynn MacDonald, Sheila Robinson, RosemaryFoley (Also Cassie the camp dog).

Back Row (L-R) Derek Copp, Bruse Nolan, Dan Murphy, Ann Marie Cleary, George VanDusen, Pat George, Georgina Etheridge, Florence Rolfe , Diane Hawco, Kim Childs.

Missing from Photo : Susan Whelan

Work Plan 2001-2002 Outline for the Summer Institute
Project Title: Summer Institute in Environmental Education

Theme: Environmental Education

Key Words: Environmental Education, teachers, professional development, sustainable forest management, boreal forest ecology

Project: The Summer Institute provides about twenty teachers and educators with skills, tools and materials to help them better integrate the concept of sustainable development and integrated resource management into their curriculum. Teachers leave the institute with a better understanding of boreal forest ecology, up-to-date information about resource management issues and strategies, and excellent curriculum tools to enable them to apply these learnings in the classroom.

Deliverables: A five day intensive workshop, to be held August 19-24, 2001 at Killdevil Lodge

Cost:

Contributing Partners	In Kind	Direct (WNMF)	Total	Percent
WNMF		10000		50%
Partnership		10000		50%
Total		20000		100%

Item	Direct Cost
Facilitation	1500
Coordination	4000
Facilities Rental	6000
Travel	3000
Workshop expenses	2000
Promotion	1000
Office expenses	1000
Sponsorship of teachers	1500

Leader: Sheldon Peddle
Executive Director
ACAP Humber Arm Environmental Association Inc.

Collaborators: The Planning Team for the 2001 Summer Institute include:

Sheila Robinson	Western Newfoundland Model Forest
Dan Murphy	District Three School Board
Diane Hawco	Teacher, Former Participant
Kim Childs	Institute Coordinator

An additional twelve people were involved as resource people during the actual event. It is anticipated that the 2001 Summer Institute will follow a similar model, with a small planning team and a larger pool of resource people.

Dates: The 2001 Summer Institute will be held Aug 19-24, 2001.

Project Relevance: This project is a key way to implement Objective 3.1: Ensure that the strengths of the Model Forest are reflected in relevant education programs at all levels and of all types - formal, informal and professional development. It ensures that key teachers in the province are fully familiar with the Western Newfoundland Model Forest and with the concept of sustainable forest management.

General Approach: The Summer Institute uses an overall approach that is interdisciplinary (combining arts and science-based approaches), recognizes the validity of diverse perspectives (industrial users as well as conservationists), and incorporates elements of critical thinking (participants are not given "simple answers" but must seek their own answers). The Summer Institute focuses on working intensively with a small group of motivated teachers, providing them access to a wide variety of resource people (from resource managers to curriculum specialists) in a spectacular outdoor setting.

End users/communications Plan:

The Summer Institute is open to twenty educators each year. Preference is given to teachers who have a demonstrated interest in and commitment to environmental education, and can commit to implementing what they've learned in their own classrooms, seminars or workshops. Current and ongoing efforts will explore ways to communicate and share successful teaching strategies throughout the Canadian Model Forest Network. In

2001, 5 seats will be made available to graduating education students from Memorial University of Newfoundland.

As in previous years, a final report will be prepared and distributed to all participants, resource people and sponsors. These reports have included valuable sections documenting the strengths of the program and recommending areas for improvement.

Schedule of Events

There are similar events which take place each year at the Summer Institute. They are:

Forest Ecology Walk to Stanleyville
 Night Walk
 Project Wild / Focus on Newfoundland Forests
 Schoolyard Naturalization
 Silviculture Tour, and
 Conflict Resolution Workshop

Last year a theme was used to tie in many of the small sessions that took place during the week. Last year the theme was "Music and Puppetry" to teach environmental education. This year we used "Water" as a theme.

Below is a rough outline of events.

Time/ Day	Sunday	Monday	Tuesday	Wednesday	Thursday	Friday
7:45 - 8:30	Breakfast	Breakfast	Breakfast	Breakfast	Breakfast	Breakfast
8:30 - 12:30		Schoolyard Naturalization	Project Wild Focus on NF Forests Lucy O'Driscoll	Silviculture Tour George Van Dusen C.C. Loughlin Tour	Intro to Aquatics	Pulling the threads together Outdoor Education Presentation Conclusion Closing
12:30 - 1:30	Lunch	Lunch	Lunch	Lunch	Lunch	Lunch
1:30 - 5:30	Arrival Registration Interpreting the Land Dan Murphy	Forest Ecology Walk to Stanleyville	Sinkhole walk	ACRE Centre Tour Discovery Centre Tablelands Tour	Caine River Role Play	Depart
5:30 -6:30	Supper	Supper	Supper	Supper BBQ	Supper	
6:30 -	Introduction Intro to Journal Writing Intro to the WNMF Intro to the Role Play Social	NF Power Presentation Envirothon	Recycling Seminar Night Walk		Musical Entertainment	

A breakdown of each session can be seen below. It describes the program as well as the resources presented to teachers.

1. What is a Model Forest

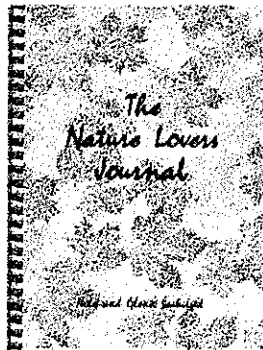
The introduction to the Model Forest is an important part of the Summer Institute. The Model forest in conjunction with other partners has supported the institute since its beginning in 1996. The introduction this year included a short lecture which concentrated on two Model Forest projects, and a video which also focused on key objectives.

Resources provided by the Model Forest included: Educational CD, Model Forest booklet: Achieving Sustainable Forest Management Through Partnership, Satellite Image of western Newfoundland: How do you use the forest?, Model Forest pin, pencils, brochures, Children's book Forests of the Nation, book mark. Pine Marten Edu Kit display at Killdevil for the week.

2. Journal Writing

Each day a journal writing session was scheduled. This was lead by Sheila Robinson, and gave the teachers a chance to sit and think about the activities that they had completed and the new things they had learned.

Resources: The Nature Lovers Journal, Provided by Creative Book Publishing



3. Schoolyard Naturalization

This session was lead by Keith Byrne, a teacher at C.C. Loughlin. Mr. Byrne went through the steps that C.C. Loughlin took to green up their schoolyard. Each step taken was represented with a pictorial display and power point presentation.

Resources: Creating a School Habitat (Planning guide for school habitat), Schoolyard Naturalization: A case study: C.C. Loughlin Elementary, Schoolyard habitats, Planning Guide. Picture display at Killdevil for the week.

4. Walk to Stanleyville

The forest ecology walk to Stanleyville was lead this year by George VanDusen. Due to unforeseen circumstances Parks Canada which normally leads this walk was unable to be involved this year. Mr. VanDusen spoke about forest succession and the various plants and animals which inhabit the boreal forest.

5. NF Power Presentation

Newfoundland Power has supported the institute in the past and again this year. They have generously sponsored one of our teachers and has put forward the possibility of sponsorship in coming years. Newfoundland Power has been the leader for some environmentally friendly projects, such as roadside cleanups and Christmas tree mulching. They have also provided funding for school activities such as cold water aquariums for salmon egg hatching and eventual release. Harvey St. Croix presented relationships that have been built in the past and provided the means for teachers to get sponsorship for school projects.

Resources: Prizes for giveaway, pens, highlighters, key chains, car baggies.

6. Night Hike

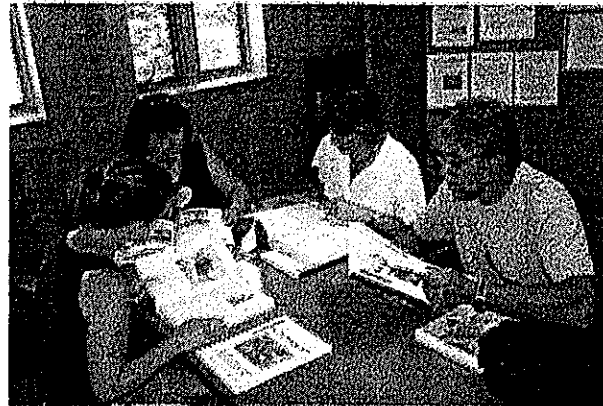
The night hike is becoming an anticipated annual event. This walk lead by Dan Murphy shows the teachers that the night is a time when other senses can be used to interpret the forest at night. The walk includes a look at animals at night, folklore and mythology.

Resources: Into the night, (Where Continents Collided Curriculum).

7. Project Wild/Focus on Newfoundland Forests

The presentation of this curriculum is a key element in the Summer Institute. In order to receive the curriculum you have to attend the in service presented by the Department of Forest Resources and Agrifoods. Lucy O'Driscoll had presented this program at the institute in the past and it is activity based and hands on.

Resources: Project Wild curriculum, Focus on Newfoundland Forests curriculum.



8. Envirothon Presentation

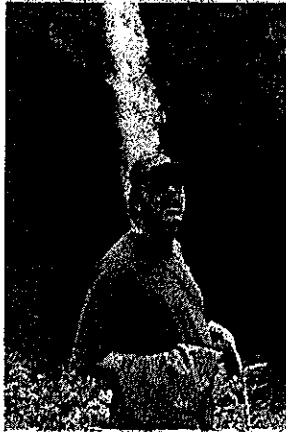
The Envirothon Presentation was set up to resemble a mini envirothon so the teachers could get a better understanding of how this event can be set up. A new informative video was played which showed footage of the first Newfoundland Envirothon and the steps that were taken to get to the National Level. This year the Envirothon was only available for students in the District three area. In the new year it will be open to students province wide. This session was lead by Cecil Lake, a science teacher at Regina High.

Resources : Promotional Video of the Newfoundland Envirothon.

9. Walk to the Sinkhole

This hike was lead by Dan Murphy and Kerry Hutching (Corner Brook Pulp and Paper). It involved a walking and climbing trail which lead to a sinkhole which was located outside of the Gros Morne Park boundaries. Dan Murphy spoke a little about the geology of the area and how the sinkhole was created.

Resources: Project Underground, a curriculum about caves and sinkholes.



10. Recycling Seminar

Karen O'Neill, from the Multi Materials Stewardship Board, presented materials on Recycling in Schools. This power point presentation showed the steps for starting a recycling program in schools. Handouts were provided and contact information for the Multi Materials Stewardship Board.

11. Silviculture Tour

Geroge VanDusen, Wayne Brown and Anne Hollihan lead this tour of Corner Brook Pulp and Papers woodland areas in Logger School Road. It consisted of the management plan of the company, the shortage of wood in the future, and the pest problems that this region has been facing in the past.

Resources: Brouchures, First Aid Kits, bookmark. Static display at Killdevil for the week.

12. Caine River Role Play

Each year a role play is presented to the teachers, and again this year we used a role play that was created by the Western Newfoundland Model Forest. The Caine River Role play was modeled to resemble the Main River issue which is currently taking place. Teachers were prepped for the role play at the beginning of the week before the actual event. This allowed time for research of the topics and also to determine where their characters stood in this issue. Each person was assigned a role and was given a number of materials that they could read before the event. The role play took the full morning. The role play was presented by Jim Taylor,

Sean Dolter and Chris Callihan.

Resources: Take home information on the Caine River Role Play. Static display at Killdevil for the week.

13. Tablelands Tour / Discovery Centre

The tablelands was initially suggested to the teachers in past years as a recreation opportunity. This year we placed it on the schedule as another interpretive walk. The tablelands are such a unique sight and most of the teachers from the east coast would not have a chance to see this area otherwise. The walk was unfortunately cut from the schedule at the last minute but a quick interpretation was given at the site.

The Discovery Centre was also a short session to let teachers know about this new attraction.

14. District Three Outdoor Education Program

Dan Murphy the Coordinator for Outdoor education for the district presented the outdoor education project that has been ongoing in the area for the past 4 years. Each year the grade 5 and 8 students attend a 2 1/2 day camp in Killdevil, where they go through various sessions which are mainly completed in the outdoor setting.

Resources: Outdoor Education is Wild T-shirt, brochure on curriculum, 2 curriculums for giveaway. Static display at Killdevil for the week.

15. Introduction to Aquatics

The introduction to aquatics, lead by Ron Burton, was a new addition to the schedule this year. The Department of Fisheries and Oceans has been developing teaching materials which can be used in an outdoor setting. There was a power point presentation and also an outdoor activity component. Teachers had the opportunity to use equipment which measured water flow, temperature, they looked at macro-invertebrates and measured water pH.

Resources: Cloth bag, t-shirt, pencil, pen, highlighter, a number of teacher materials on oceans and freshwater. Static display at Killdevil for the week.



Assessment

1. For you personally was the Institute worthwhile?

- 10 Very worthwhile
- 0 Somewhat worthwhile
- 0 not worthwhile

2. How close did the institute come to meeting the goals outlined in the promotional material?

- 10 Exceed
- 0 Achieved goals
- 0 N/A

3. Did the institute meet your personal expectations?

- 10 Exceed
- 0 Achieved goals

4. How would you rate the duration of the Institute?

- 1 Too long
- 7 Just right
- 2 Not long enough

5. How would you rate the following components of the Institute? Scale of 1-10.

Program Elements										
	1	2	3	4	5	6	7	8	9	10
Ice Breaker									4	3
What is a Model Forest						1		1	3	4
Journal Writing					2			3	1	4
Schoolyard Naturalization						1	1	1	4	3
Forest Ecology Walk								1	2	6
NF Power Presentation					1	1	1	1	2	3
Envirothon									1	9
Night Hike									1	8
Project Wild										9
Sinkhole									1	9

Program Elements										
Recycling Seminar					1		4	1	3	1
Silviculture Tour						1	1	1	2	5
C.C. Loughlin				1			1	3	2	3
ACRE Centre Stop							2	2	2	4
Discovery Centre						1	1	1	1	4
Intro to Aquatics									2	8
Role Play	1	1	1	1			2	2	1	1
District Three Outdoor Education									2	8
Closing									2	7

6. How would you rate the following categories?
 1 - Weak 5 - Excellent

	1	2	3	4	5
Handout materials					10
Practical Exercises					10
Equipment / Facilities				3	7
Overall Flow of Materials					10
Atmosphere					10

7. Answer the following questions with either 1-Agree 5-Disagree

	1	5
The Program was relevant to my teaching responsibility	10	
The program was interesting and engaging	10	
I learned a lot during the week	10	
There was too much information given in too little time		10
It lacked focus and was not clear		10

8. If you had the chance to change certain events during the week what would you change and why?

- A debate process is fine, but teachers have been in-serviced and taught this before. I would rather another activity than this. Schoolyard naturalization was fantastic, but the speaker was a bit boring and was all over the place. I heard a number of complaints about this.

- make role play a whole day
- spend less time on first schoolyard naturalization presentation
- Full day on silviculture tour and do discovery centre and tablelands another day
- Shorter role play
- I understand that Model Forest deals with western Newfoundland but if your audience is all of NF you should include presentations about the entire island. I found the Avalon teachers were asking a lot of questions about stuff in their area.
- I would have liked to do the tablelands tour, but I realize that time did not allow us to do this
- The role play should be shorter in duration only about one hour and presented as a teaching tool. This would give more time for other outdoor experiences.
- Shorter role play session
- With so much information given you need an hour break after supper to refresh your mind and cope with the evenings activities so as not to feel exhausted.
- The role play didn't have to be as long, we could have been introduced to the idea and not taken as long to do it.
- Leave out the role play - fine to introduce the concept but 3hrs.... wasted to much time - could have done other things.

11. How has this program compared with others you have participated in?

Weak	0
Average	0
Excellent	9

12. Identify the learning conditions or activities which helped or hindered your learning experience throughout the sessions.

Helped

- I can't begin to tell you how much I have learned. The resource materials were great.
- The hiking and knowledge of the forest from George, Wayne and Kerry.
- The information about the Envirothon - excellent
- The sinkhole was amazing
- The information on Naturalization
- All the sessions

- Actually doing the activities
- Nighthike was great
- George VanDusen was a great help
- Sinkhole was out of this world!
- The introduction to topics, hands on experiences, discussions, outdoor experiences were wonderful and I enjoyed every aspect of your program.
- It was certainly appreciated that I was made feel "able" to do these activities with my class. I never felt like the material was beyond and that was in large part due to the attitude of the presenters and staff.
- Everything helped
- Participating in the actual activities
- It was outside
- very hands on
- Excellent guest speakers
- Excellent organizers and staff
- Killdevil is an excellent learning environment

Hindered

- some days were just too long
- homework for role play- there was no time to do homework so I felt inadequate when it came time to do the role play. On the other hand - doing the homework shouldn't be included. Instead just go through the process not the actual role play. My experiences with this method aren't positive and it shouldn't be that way.
- role play a little long
- no breaks
- The presenter's delivery of the naturalization session. His slow, hesitant, unorganized manner detracted from what could have been exciting and inspiring. I gained insight in spite of him. Please don't use him again.

Funding Organizations

This year attempts were made to obtain funding from regional publishers. No positive responses were received. One publisher did send along some books and journals which were utilized during the Institute.

Recommendations

The Institute has been successful each year in educating teachers across the province. For the past two years 15 teachers have attended. To have a successful institute this number has to raise. Some suggestions to raise more interest in this project are:

1. Have in-school presentations on the institute. It may be advised to suggest that a teacher from a close area that has already attended to accompany the presenter.
2. Advertize the institute in the NLTA Bulletin or on Stemnet. If possible an email could be sent to all the teachers via stemnet as well. This would have worked well if done in February-March.
3. Put new updates on WNMF website and get information out to other Model Forests.

DRAFT BUDGET

BUDGET

Partnership Income

Western Newfoundland Model Forest	6000.00
Corner Brook Pulp and Paper Ltd	3000.00
Abitibi-Consolidated	1500.00
Department of Forest Resources and Agrifoods	1500.00
Registration Fees	1400.00
Newfoundland Power	300.00
NLTA	2500.00
DFO	1000.00
Total Income	17200.00

Expenses

Facilities	3700.85
CBPP BBQ	339.96
Social	171.59
T-Shirts	483.00
Gifts	109.25
Bus Rental	800.00
Climbing Rope	150.00
Misc.	100.00

APPENDIX

Table of Contents

APPENDIX 1	Schedule of Events	Page 19
APPENDIX 2	Resource Persons Addresses	Page 25
APPENDIX 3	Participants Addresses	Page 28
APPENDIX 4	School Mail out	Page 29
APPENDIX 5	Pictures Taken During the Week	Page 32

Summer Institute in Environmental Education
Forests, Wildlife and People 2001
Schedule of Events

Sunday August 19

4:30-5:30	Registration	Mansion
5:30-6:30	Supper	Dining Hall
6:30-7:00	Introduction to the Summer Institute Dan Murphy	Lomond Room
7:00-7:30	Introduction to Journal Writing Sheila Robinson	Lomond Room
7:30-8:00	What is a Model Forest? Jim Taylor	Lomond Room
8:00-8:30	Introduction to the Role Play Sean Dolter	Lomond Room
8:30	Social	Lomond Room/Campfire Circle

Summer Institute in Environmental Education
Forests, Wildlife and People 2001
Schedule of Events

Monday August 20

7:45-8:30	Breakfast	Dining Hall
8:30-12:00	Schoolyard Naturalization Keith Byrne	Lomond Room
12:00-1:00	Dinner	Dining Hall
1:30-5:30	Walk to Stanleyville Parks Canada	Meet at Dining Hall
5:30-6:30	Supper	Dining Hall
6:30-7:00	Journal Writing Sheila Robinson	Lomond Room
7:00-8:00	NF Power Presentation Harvey St. Croix	Lomond Room
8:00-9:30	Envirothon Cec Lake	Lomond Room
9:30-10:30	Night Walk Dan Murphy	Meet at mansion

Summer Institute in Environmental Education
Forests, Wildlife and People 2001
Schedule of Events

Tuesday August 21

7:45-8:30	Breakfast	Dining Hall
8:30-10:00	Project Wild & Focus on NF Forests (Lucy O'Driscoll)	Lomond Room
10:00-10:15	Break	Dining Hall
10:15-12:00	Morning Session Cont.	Lomond Room
12:00-1:00	Dinner	Dining Hall
1:00-2:45	Focus on NF Forests & Project Wild cont.	Lomond Room
2:45-3:00	Review & Refocus	Lomond Room
3:00-5:30	Walk to the Sinkhole Dan Murphy	Meet at Mansion
5:30-6:30	Supper	Dining Hall
7:00-7:30	Journal Writing	Lomond Room
7:30-8:30	Recycling Seminar Karen O'Neil	Lomond Room
8:30	Campfire	

Summer Institute in Environmental Education
Forests, Wildlife and People 2001
Schedule of Events

Wednesday August 22

7:00-7:30	Early Breakfast	Dining Hall
7:45-9:00	Travel Time	Lomond Room
9:00-12:00	Silviculture Tour	Logger School Rd
12:30-1:00	Lunch	Cooks Marsh
1:00-2:00	Travel Time	
2:30-3:30	Tablelands Tour Parks Canada	Gros Morne
4:00-4:30	Discovery Centre	Woody Point
4:30	"Photo"Synthesis	Main Deck
6:00-7:00	BBQ	Meet at Masion
7:00	Off Time	

Summer Institute in Environmental Education
Forests, Wildlife and People 2001
Schedule of Events

Thursday August 23

7:45-8:30	Breakfast	Dining Hall
8:30-9:00	Journal Writing Sheila Robinson	Lomond Room
9:00-12:30	Introduction to Aquatics Ron Burton	Meet at Lomond Room
12:30-1:30	Lunch	Dining Hall
1:30-5:30	Caine River Role Play Sean Dolter	Lomond Room
5:30-6:30	Supper	Dining Hall
6:30-8:00	Off Time	
8:00	Presentation of Certificates Lomond Room Musical Entertainment	

Summer Institute in Environmental Education
Forests, Wildlife and People 2001
Schedule of Events

Friday August 24

7:45-8:30	Breakfast	Dining Hall
8:30-9:30	Final Journal Writing and Reflection Sheila Robinson	Lomond Room
9:30-11:00	School District 3's Outdoor Education Project Dan Murphy	Lomond Room
11:00-11:15	Closing	Lomond Room
11:15-12:00	Site Cleanup	
12:00-12:30	Lunch	Dining Hall or To Go

Resource People

Dan Murphy
P.O. Box 368
Corner Brook, NF
A2H 6G9
Ph: 637-4033
Fax: 634:1828
Email: dmurphy1@calvin.stemnet.nf.ca

Kimberly Childs
General Delivery
York Harbour, NF
A0L 1L0
Ph: 681-2202
Email: kimberly_childs@hotmail.com

Ron Burton
Department of Fisheries & Oceans
1 Regent Square
Corner Brook, NF
A2H 7K6
Tel: 637-4349
Email: burton@dfo-mpo.gc.ca

Jim Taylor
Western Newfoundland Model Forest
Forest Centre
University Drive
Corner Brook, NF
A2H 6P9
Tel: 637-7302
Fax: 634-0255
Email: jtaylor@wnmf.com

Sean Dolter
Western Newfoundland Model Forest
Forest Centre
University Drive
Corner Brook, NF
A2H 6P9
Tel: 637-7300
Fax: 634-0255
Email: sdolter@wnmf.com

George Van Dusen
Corner Brook Pulp and Paper
P.O. Box 2001
Corner Brook, NF
A2H 6J4
Tel: 637-3322
Fax: 637-3469
Email: GvanDusen@CB.Kruger.com

Chris Callihan
Western Newfoundland Model Forest
Forest Centre
University Drive
Corner Brook, NF
A2H 6P9
Tel: 637-7300
Fax: 634-0255

Harvey St. Croix
Newfoundland Light and Power Co. Limited
83 West Street
Corner Brook, NF
A2H 2Y6
Ph: 637-7814

Lucy O'Driscoll
Department of Forest Resources and Agrifoods
Salmonier Nature Park, NF
A1B 4J6
Ph: 729-6974
Email: LucyO@nfld.com

Cecil Lake
40 North Street
Corner Brook, NF
Ph: 639-9323
Email: cflake@stemnet.nf.ca

Anne Marceau
Gros Morne National Park
P.O. Box 130
Rocky Harbour, NF
A0K 4N0
Tel: 458-2417
Fax: 458-2059

Karen O'Neill
Multi-Materials Stewardship Board
P.O. Box 8131, Station A
St. John's, NF
A1B 3M9
Tel: 709-753-0949
Fax: 709-753-0974
Email: koneill@mmsb.nf.net
Webpage: www.mmsb.nf.ca

Keith Byrne
Schoolyard Naturalization
2 Falls Avenue
Steady Brook, NF
A2H 2N2
Ph: 634-4807

Nelson and Sarah White
Musical Entertainment
6 Hillcrest Drive, NF
Stephenville, NF
Ph: 643-5150

Bruce Martin
Martins Auto Service
Main Street
Woody Point, NF
Ph: 453-2207

Malcolm Turner
Killdevil Camp and Conference Centre
P.O. Box 192
Pasadena, NF
A0L 1K0
Tel: 686-2363
Fax: 686-2519

Diane Hawco
11 Hillcrest Drive
Stephenville, NF
A2N 2C6
Email: didihawco@hotmail.com
Tel: 709-643-4425

Name	Street Address	City	PC	Tel	Email
Cindy Barker	19 Lakeview Dr	Kippens	A2N 3B9	643-4390	
Jan Bailey	12 Prospect Street	St. John's	A1C 1L2	722-7575	
Patricia George	P.O. Box 511	Spaniard's Bay	A0A 1G0	786-9665	pgeorge@stemnet.nf.ca
Rosemary Foley	P.O. Box 5300	Stephenville	A2N 3M8	643-5237	
Tracey Pretty	General Delivery	Chapel Arm	A0B 1L0	592-2485	traceympretty@yahoo.com
Yolanda Collins	15A Tris Place	Paradise	A1L 1G2	782-2223	jycollins99@hotmail.com
Bruce Nolan	23 Rennies Mill Rd	St. John's	A1C 3P9	722-4743	gadus98@yahoo.com
Kristy Hewitt	Terra Nova Park				
Vanessa Payne	Box 122	Cow Head	A0K 2A0	243-2315	p59vvp@mun.ca
Susan Whalen	P.O. Box 5300	Stephenville	A2N 3M8	643-2508	
Derek Copp	c/o Joan Milton RR3	Bridgewater, NS	B4V 2W2		derek@copp.to
Florence Rolfe	9 Giles Place	Mount Pearl	A1N 2R4	364-4327	
Lynn Macdonald	18 Gillis Place	Stephenville	A2N 3R6	643-2471	
Ann Cleary	10 Surin Street	Mount Pearl	A1N 5B3		amcleary@nfld.com

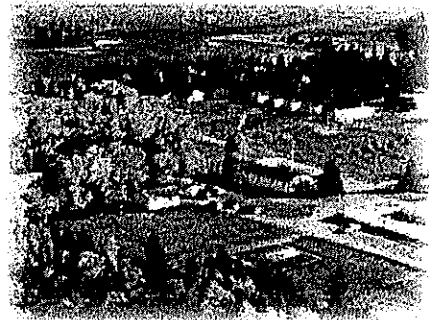
Summer Institute in Environmental Education

The Summer Institute in Environmental Education is an intense five day learning experience. A small group of participants will work together and, in the company of prominent resource people, receive advanced training in topics related to sustainable development, resource management and outdoor environmental education.

Past summer institutes have been extremely successful in providing teachers with new ideas that could be integrated into their respective curriculums. This year's institute intends to provide the same opportunities.

Where is the Institute held?

The Summer Institute is held in the beautiful surroundings of Gros Morne National Park. Killdevil Camp and Conference Centre has become home to the event. Directly across East Arm, Bonne Bay is Killdevil Mountain, part of the long range mountains. The mountain was given the name long ago when it was said that "it would kill any poor devil who tried to climb it." The camp can accommodate up to 130 campers in heated cabins with modern facilities.



The staff at Killdevil provide service with a smile to all their campers. The camp offers various recreational opportunities. In addition to the nearby walking trails and recreation hall, the camp has a large playing field, outdoor pool, tennis/basketball courts and canoes.

Past Summer Institutes

The Summer Institute in Environmental Education was initiated in 1996 by the Centre for Forest and Environmental Studies. Since then there have been three additional institutes in 1998, 1999 and 2000. Teachers and resource persons from across Newfoundland and Labrador have participated in the institute. Other participants have been communications officers from Fundy Model Forest and Lake Abitibi Model Forest, as well as teachers from the province of New Brunswick. All who decide to take part in the institute have had extremely positive experiences, and say that "every teacher interested in the environment should take part."

The institute tries to create a week that is full of informative sessions but also with recreational activities that give teachers quite times while still enjoying the outdoors.

Why should you apply?

As it is known by most teachers, resources are limited when it comes to dealing with environmental education in schools. The goals of this project are to give teachers an enhanced understanding of boreal forest ecology, then to provide them with the materials needed to go back to the classroom and relay the information to their students. To let each teacher get the best opportunities to do this we limit the number of participants to 20. We also strongly advise that no families are to come along. The reason for this is so all the activities are engaged and the participant is not preoccupied with other activities. This creates more time for the person to get involved with the other teachers.



Final Note!

All past participants have enjoyed their stay at Killdevil, and have interested fellow teachers to get involved. Besides getting a load of useful materials the participants get the names and numbers of various resource people and of the fellow participants. This allows them to stay in contact when needed.

We also have a lot of fun. Canoe trips, sing-a-longs, dances and so much more. It's a blast!

If you are still interested, please fill out an application and send it to me. Apply soon! I look forward to getting your names and numbers.

SEE YOU AT THE CAMP!

Summer Institute Coordinator
Kimberly Childs
School District 3
P.O. Box 368
Corner Brook, NF
A2H 6G9
Ph: 637-4033 Fax: 634-1828
email: kimberly_childs@hotmail.com

Supporters of the Summer Institute

Gros Morne National Park

Western Newfoundland
Model Forest

Corner Brook
Pulp and Paper Ltd.

Department of Fisheries and Oceans

Newfoundland and Labrador Teachers Association

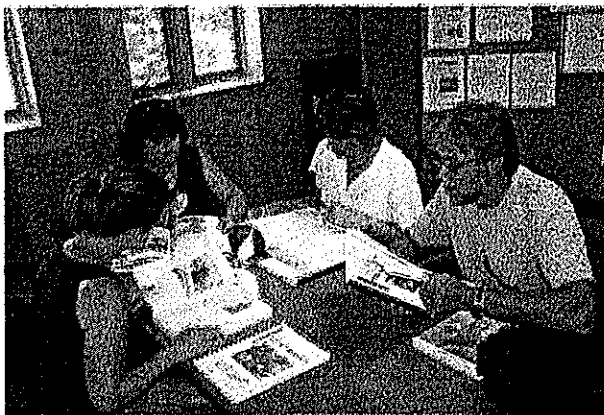
Newfoundland Power

District 3 School Board

Abitibi-Consolidated

Pictures Taken During the Week

Project Wild



Sinkhole



Intro to Aquatics



Silviculture Tour

