

**SUMMER INSTITUTE IN ENVIRONMENTAL EDUCATION
"THE FOREST IN US"**

Western Newfoundland Model Forest
September 2002

Kimberly Childs

0-110-008

Introduction

The Summer Institute in Environmental Education was initiated in 1996 by the Centre for Forest and Environmental Studies. It has continued to be a success with teachers from all across the province attending in 1998, 1999, 2000 and this year.

This years institute was a complete success. The following introduction was taken from 1999 report written by Martin Von Mirbach. It outlines the institutes goals and methods of teaching.

Goals: The Summer Institute provides participants with:

- an enhanced understanding of boreal forest ecology
- up-to-date information about resource management issues and strategies; and
- curriculum tools to enable them to apply these learnings in their educational activity.

Core Client base: Most participants are full-time teachers working at the primary or secondary school levels in Newfoundland and Labrador. The Summer Institute is designed to be applicable to teachers working in a wide variety of fields, including the sciences, social studies, arts, fine arts and learning resources.

Methods: The Summer Institute employs a number of important methods in achieving its goals.

- It works with a small group of participants, typically 15-25 people, who stay together throughout the institute, building team cohesion.
- It provides participants with access to a wide variety of resource people, including educators, resource managers, and other interests.
- It takes place in an outdoor setting and shows by example how outdoor education can be a powerful tool to enhance students' appreciation for and understanding of the natural environment, sustainable development and sustainable forest management.

Key Information about Summer Institute 2000

Date: August 18 -23th, 2002
Location Killdevil Camp and Conference Centre, Gros Morne National Park
Facilitator Dan Murphy, Outdoor Education Coordinator
Kimberly Childs, Summer Institute Coordinator

Resource People

Malcolm Turner	Killdevil Camp
Dave Morrow	Gros Morne National Park
Harvey St. Croix	Newfoundland Power
Lucy O'Driscoll	Wildlife Division, Department of Forest Resources and Agrifoods
Cecil Lake	Envirothon
Eric Seaward	Department of Fisheries and Oceans
Jim Taylor	General Manager, Western Newfoundland Model Forest
Sean Dolter	Integrated Resource Management Planner/Specialist
Eric West	Entertainment
George VanDusen	Corner Brook Pulp and Paper Limited
Wayne Brown	Corner Brook Pulp and Paper Limited
Anne Hollihan	Corner Brook Pulp and Paper

Coordinator

Kimberly Childs

Camp Faciliator

Diane Hawco

Killdevil Staff

Malcolm Turner, Gerry, Sid, Ina, Bella, Linda

Sponsors

Western Newfoundland Model Forest
Corner Brook Pulp and Paper
Department of Forest Resources and Agrifoods
Newfoundland Power
School District Three
Department of Fisheries and Oceans

**Western Newfoundland Model Forest
2001-2002 Work Plan
Project 17 - Summer Institute In Environmental Education**

Theme: Environmental Education

Key Words Environmental Education, teachers, professional development, sustainable forest management, boreal forest ecology.

Project: The Summer Institute provides about 20 teachers and educators with skills, tools and materials to help them better integrate the concepts of sustainable development and integrated resource management into their curriculum. Teachers leave the Summer Institute with better understanding of boreal forest ecology, up to date information about resource management issues and strategies, and excellent curriculum tools to enable them to apply these learnings in the classroom.

Deliverables: A five day intensive workshop, to be held Aug 18-23, 2002 at Killdevil Lodge.

Cost:

Contributing Partners	In Kind	Direct (WNMF)	Total	Percent
WNMF		10 000		50%
Partnership		10 000		50%
Total		20 000		100%

Item	Direct Cost
Facilitation	\$1,500
Coordination	\$4,000
Facilities Rental	\$6,000
Travel	\$6,000
Workshop Expenses	\$2,000
Promotion	\$1,000
Office Expenses	\$1,000
Sponsorship of Teachers	\$1,500

Participants

Due to the lack of interest this year the Summer Institute in Environmental Education was canceled on Aug 14, 2002. The teachers that were registered to attend expressed interest in registering next year if the institute is continued. The interested teachers addresses can be found in Appendix A.

New Components

Each summer institute offers a package of information that has not changed since 1996. Organizers attempt to offer a different theme to each years in-servicing and this years theme was "the forest in us." We had included a new session called "Earth Connections" and it was to be presented by Lucy O'Driscoll. It was to include topics such as spirituality and the human connectivity to the forest on this level. The table below shows the scheduling for the Summer Institute 2002.

Schedule of Events August 18 - 23, 2002

Time/Day	Sunday	Monday	Tuesday	Wednesday	Thursday	Friday
Breakfast						
Morning Session		Schoolyard Naturalization (C.C. Loughlin) Forest Ecology Module High School	Project Wild Focus on NF Forests (Lucy)	Woodlands Tour with CBPP (George)	Ron Burton Water talks and activities	Final Journal Writing Discovery Centre Project Outdoor Education Project(Dan)
Lunch				Cooks Marsh		
Afternoon Session	Arrival and unpacking	Walk to Stanleyville	Cont. Until 2:30 Hike to the Sinkhole (Dan) Or Tour of Discovery Centre	Museum and Bowater Exhibit. C.C. Loughlin Schoolyard Naturalization	Role Play WNMF	

Dinner						
Evening Session	Introduction to Kildevil (Dan, Malcolm) Introduction to the Model Forest Intro to Role Play	Earth Connection s. (Lucy O'Driscoll)	Envirothon (Cec) Newfoundland Power Presentation Night Hike (Dan)	BBQ	OFF TIME - Presentation of certificates and t-shirts - Entertainment Provided by Eric West	
Activities	Social	Camp Fire				

Budget

Expenses associated with this years instituted included only one component. Coordination of the in-service was ongoing despite the lack of interested teachers. All sessions were scheduled and contacts were established to determine times and dates.

Expenses:

Coordination Fee \$2000.00

Suggestions for 2003

As with all Summer Institutes that I have coordinated it is always a struggle to get teachers informed about what the partners have to offer. Coordination of the event should start early in the year, around March-April. The teachers are easier to reach at their schools and there is no worry about the summer holiday season. This is the primary reason that the Summer Institute 2002 was not a success. Teachers were in wind-down mode and not interested in reading or getting information on in-servicing.

Another possible reason for the failure of the project was the fact that the information was sent to each districts office and not to the schools themselves. This means that we have to rely on director/coordinator will read the memo, copy the memo and send it out to the schools in their district. This is where the problem is. The information is not getting out to teachers. A new plan has to be developed to get the information out. Working at the school level and not the district level is the best course of action.

A number of districts can be covered in a very short time. Presentations can be made to schools in Districts Three, Four and Two in a few weeks. Development of a generic presentation that outlines the major components of the institute and the information that would be made available to teachers that attend should be a priority. There are a number of past reports and digital media that can be used to

build this presentation.

A large mail-out that includes all the schools in the province will get the best results rather than a continued effort to first reach district offices. Included in this report is a copy of the resources that have been used in the past as a form of communication between the Summer Institute staff and the schools.

Another recommendation is to advertize the institute in the NLTA Bulletin or send a mail-out via Stemnet. This would work best if a memo was sent in February and again in April.

This information can be altered and reused for 2003. The summer Institute poster that was printed by the Western Newfoundland Model Forest should continue to be used and the appropriate updates made.

All teachers, resource persons and graduates of education should be made aware of the institute. It should not be centered towards one category of educators. All sessions and information received can be used in some format with children in grades K-12 and used in a number of subjects including math, science, literature and physical education. Project Wild is a good example of this.

APPENDICES

APPENDIX A	INITIAL INFORMATION LETTER TO SCHOOLS
APPENDIX B	NOTICE AND APPLICATION
APPENDIX C	INSTITUTE SUMMARY AND INFORMATION SHEET ON KILLDEVIL
APPENDIX D	BROCHURE FOR CAMPER'S ON THINGS TO TAKE TO CAMP AND EMERGENCY INFORMATION
APPENDIX E	ADDRESSES OF POSSIBLE TEACHERS FOR SUMMER INSTITUTE 2003

APPENDIX A



Summer Institute in Environmental Education
School District 3
P.O. Box 368
10 Wellington Street
Corner Brook, Newfoundland
A2H 6G9
Tel: (709) 637-4029
Fax: (709) 634-1828
email: kchilds@stemnet.nf.ca

June 3, 2002

Teachers/Educators

Re: Summer Institute in Environmental Education

To Whom it May Concern,

I am writing to inform you of a Summer Institute in Environmental Education which will be taking place from the 18-23 of August. The Summer Institute is a week long in-service which provides teachers with information and materials which will help them to become more educated in the fields of sustainable management and outdoor education. Only a small number of teachers are selected which ensures that each teacher gets the information that he/she needs.

If you know of any teachers who would be interested in this type of experience please direct them to me. I have enclosed some additional information which will answer any questions that you may have. I have also enclosed copies of the application. It is to be also noted that there are still some sponsored positions that would allow teachers to attend without paying the registration fees.

If you need additional information please don't hesitate to call.

Thank you for your time.

Kimberly Childs
Summer Institute Co-ordinator
(709) 637-4029

APPENDIX B

NOTICE TO TEACHERS

SUMMER INSTITUTE IN ENVIRONMENTAL EDUCATION "The Forest In Us"

The **Summer Institute in Environmental Education** is an intense five-day learning experience. A small group of participants will work together and in the company of prominent resource people, receiving advanced training in topics related to sustainable development, resource management and environmental education. Three main topic areas are covered:

- Outdoor education, leading to a better understanding of forests, geology and wildlife
- Information and discussion about current issues related to ecosystem management and sustainable forest management
- Tools to incorporate these learnings into the curriculum and to make environmental education come to life in the classroom

The Summer Institute is organized by the **Education Working Group, Western Newfoundland Model Forest**. Some of the many partners involved include the **Centre for Forest and Environmental Studies, Department of Forest Resources and Agrifoods, Department of Education, Memorial University, College of the North Atlantic, Gros Morne National Park, Gros Morne Discovery Centre, Corner Brook Pulp and Paper**, etc. The first Summer Institute was held in 1996, and was a tremendous success. The 2002 program will be directed primarily at the needs of secondary school teachers.

WHEN AND WHERE: August 18-23, 2002
Killdevil Camp, Gros Morne Park

WHO SHOULD ATTEND:

- Science or Social Studies teachers
- Teachers who teach in multiple subject areas
- Learning Resources instructors
- Teachers with a particular interest in environmental education, and motivated to learn new ways of bringing their interest to their teaching

PREFERENCE WILL BE GIVEN TO:

- Full time teachers
- Teachers at the junior and high school levels

REGISTRATION FEE: \$300

APPLICATION: Fax or mail in this application form. Where necessary, we will assist successful applicants to explore funding sources for the registration fee.

FURTHER INFORMATION: Kimberly Childs
District 3 School Board
PO Box 368
Corner Brook, NF
A2H 6G9
Tel: 637-4029 or 4000 Fax: 634-1828

APPLICATION

SUMMER INSTITUTE IN ENVIRONMENTAL EDUCATION 2002

Name: _____ School: _____

Address: _____

Phone: home: _____ Work: _____ Fax: _____

Email: _____

What subjects and grades are you currently teaching?

Why do you want to attend the 2001 Summer Institute in Environmental Education?

What past experience or in-service training have you had in environmental education?

How will you share what you've learned with your students, and with your colleagues?

Send to: Kimberly Childs
District 3 School Board
P.O. Box 368
10 Wellington Street
Corner Brook, NF
A2H6G9
Or Fax (709) 634-1828

APPENDIX C

Summer Institute in Environmental Education

The Summer Institute in Environmental Education is an intense five day learning experience. A small group of participants will work together and, in the company of prominent resource people, receive advanced training in topics related to sustainable development, resource management and outdoor environmental education.

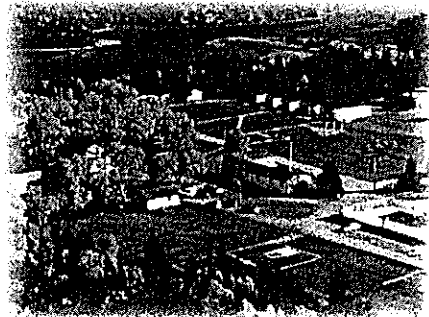
Past summer institutes have been extremely successful in providing teachers with new ideas that could be integrated into their respective curriculums. This year's institute intends to provide the same opportunities.

Where is the Institute held?

The Summer Institute is held in the beautiful surroundings of Gros Morne National Park. Killdevil Camp and Conference Centre has become home to the event.

Directly across East Arm, Bonne Bay is Killdevil Mountain, part of the long range mountains. The mountain was given the name long ago when it was said that "it would kill any poor devil who tried to climb it." The camp can accommodate up to 130 campers in heated cabins with modern facilities. The staff at Killdevil provide service with a smile to all their campers.

The camp offers various recreational opportunities. In addition to the nearby walking trails and recreation hall, the camp has a large playing field, outdoor pool, tennis/basketball courts and canoes.



Past Summer Institutes

The Summer Institute in Environmental Education was initiated in 1996 by the Centre for Forest and Environmental Studies. Since then there have been three additional institutes in 1998, 1999, 2000 and 2001. Teachers and resource persons from across Newfoundland and Labrador have participated in the institute. Other

participants have been communications officers from Fundy Model Forest and Lake Abitibi Model Forest, as well as teachers from the province of New Brunswick. All who decide to take part in the institute have had extremely positive experiences, and say that "every teacher interested in the environment should take part." The institute tries to create a week that is full of informative sessions but also with recreational activities that give teachers quite times while still enjoying the outdoors.

Why should you apply?

As it is known by most teachers, resources are limited when it comes to dealing with environmental education in schools. The goals of this project are to give teachers an enhanced understanding of boreal forest ecology, then to provide them with the materials needed to go back to the classroom and relay the information to their students. To let each teacher get the best opportunities to do this we limit the number of participants to 20. We also strongly advise that no families are to come along. The reason for this is so all the activities are engaged and the participant is not preoccupied with other activities. This creates more time for the person to get involved with the other teachers.



Final Note!

All past participants have enjoyed their stay at Killdevil, and have interested fellow teachers to get involved. Besides getting a load of useful materials the participants get the names and numbers of various resource people and of the fellow participants. This allows them to stay in contact when needed. We also have a lot of fun. Canoe trips, sing-a-longs, dances and so much more. It's a blast!

If you are still interested, please fill out an application and send it to me. Apply soon! I look forward to getting your names and numbers.
SEE YOU AT THE CAMP!

Summer Institute Coordinator
Kimberly Childs
School District 3
P.O. Box 368
Corner Brook, NF
A2H 6G9
Ph: 637-4029 Fax: 634-1828
email:kchild@stemnet.nf.ca

Supporters of the Summer Institute

Gros Morne National Park

Western Newfoundland
Model Forest

Corner Brook
Pulp and Paper Ltd.

Department of Fisheries and Oceans

Newfoundland Power

District 3 School Board

APPENDIX D



Summer Institute in Environmental Education 2002

Where: Killdevil Camp and Conference Centre is located at Lomond in the Gros Morne National Park. Directly across East Arm, Bonne Bay, from the campsite is Killdevil Mountain, part of the Long

Range Mountains. The mountain was given the name long ago when it was said that "it would kill any poor devil who tried to climb it." The camp can accommodate up to 130 campers in heated cabins with modern facilities.

Sponsors

Abitibi Consolidated
Centre for Forest and Environmental
Studies

Corner Brook Pulp and Paper Ltd.
Edufor

Newfoundland Forest Service

APPENDIX E

Angelina Thornhill
Valleyview Apartments
101 Terra Nova Road
Apt 405 Building 2B
St. Johns, NF
A1B 1G1

Tina Ryan
Po Box 70
Trout River, NF
A0K 5P0

Wayne Rideout
PO Box 87
Grand Bank, NF
A0E 1W0

Dalida Roussel
18A St. Catherines Street
Grand Falls Windsor, NF
A2A 1V8

Doug Furry
PO Box 306
Norris Arm, NF
A0G 3M0

Kim Furry
PO Box 306
Norris Arm, NF
A0G 3M0

