



The Canadian Model Forest Network

Bonne Bay Pond Survey

August 1999

Prepared for: The Western Newfoundland Model Forest
Prepared by: Jennifer Chaulk

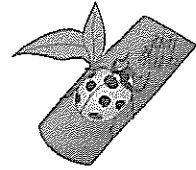
The Canadian Model Forest
— Bonne Bay Pond Survey, AUGUST, 1999

PJ# 2-004-001



Table of Contents

	Page
1.0 Introduction	1
1.1 Background	1
1.2 Purpose	1
1.3 Methodology	2
2.0 Results	3
2.1 Tables	
Table 2.1.1	3
Table 2.1.2	3
Table 2.1.3	4
Table 2.1.4	5
2.2 Discussion of Results	6
3.0 Conclusion	7
Appendix 1	8



1.0 Introduction

1.1 Background

Citizen's Forest Advisory Committee (CFAC) is a group of dedicated volunteers and forest users assisted by the Newfoundland Forest Service (NFS), Corner Brook Pulp and Paper (CBPPL), and other federal and provincial departments. CFAC has taken the responsibility of assisting with the monitoring of forestry activities and advising the province and CBPPL on harvesting activities in Management District 15. In 1999, the Citizen's Forest Advisory Committee (CFAC) initiated a survey which would identify the concerns of cabin owners pertaining to the Five Year Timber Harvesting Plan proposed by Corner Brook Pulp and Paper Ltd for the Big Bonne Bay Pond area.

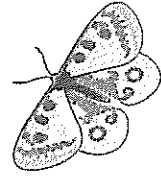
The Five Year Timber Harvesting Plan is a detailed proposal of Forest Management activities to take place on Crown controlled land within certain limits. The Western Newfoundland Model Forest has developed a process whereby a planning team was created to develop operating plans for District 15 which is contained within Model Forest boundaries. These Plans allow both commercial and domestic operators to extract timber at sustainable levels that will have minimal effects on the forest ecosystem. The operations use Environmental Protection Guidelines as developed by the Department of Forest Resources and Agrifoods and other agencies, to ensure minimal impact on wildlife, fish habitat, water quality, soil integrity, aesthetic, recreational and spiritual values.

1.2. Purpose

The objectives of the survey were:

- to determine the major concerns of cabin owners with regards to the proposed cutting in the area.
- to educate the cabin owners of the area as to the area that will be harvested in the Five Year Operating Plan period from 1998-2003.

1.3. Methodology



The Bonne Bay Pond Survey was conducted on six different occasions (July 17, 24, 31 and August 1, 14, 22), all taking place on either Saturday or Sunday. During each trip to Bonne Bay Pond the surveys were conducted on a door-to-door basis. The following cabin areas were surveyed during the six trips : Jack Ladder, Spruce Hill Road, The New Road, Old Bonne Bay Pond Road, and the Depot. For each of the surveys completed the owners name and address was taken and a series of questions (Appendix 1) were asked. Any concerns or queries relating to the Five Year Operating Plan, the Western Newfoundland Model Forest or CFAC were answered. After the survey was completed and various questions were answered, each cabin owner was asked whether or not they would like to join CFAC and then they were given some reading material that would further educate them about the Canadian Model Forest Network, CFAC and other various forestry issues.

The material presented to each person surveyed was:

- The March 1999 Western Newfoundland Model Forest Newsletter, "Forest Watch".
- The Citizen's Forest Advisory Committee brochure.
- The Canadian Model Forest Network brochure.

Each of the people surveyed was encouraged to use the CFAC hotline if they had any concerns, questions or complaints.

2.0. Results

2.1 Tables

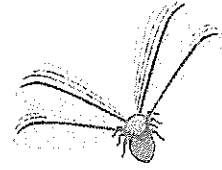


Table 2.1.1

Question 1. Are you aware of Corner Brook Pulp Paper Ltd's Five Year Timber Harvesting Plans for the Bonne Bay Pond area?	
Yes	29%
No	71%

*Most of those who responded no to the above question were, however, aware of the cutting that had begun in the area.

Table 2.1.2

Question 2. Do you think that this harvesting may affect you?	
Yes	68%
No	32%

How?	
Scenery	35%
Wildlife (hunting, habitats)	35%
Snowmobiling (access to)	29%
Fishing	21%
Pond (cutting too close)	19%
Erosion	6%
Pollution of the forest and waterbodies	4%
Hiking areas	1%
Tourism	1%

*The percentages in this table do not add up to 100% because the majority of people surveyed had multiple answers to this question.

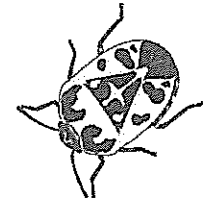


Table 2.1.3

Question 3. Do you have any concerns pertaining to this plan and your cabin area?	
Yes	83%
No	17%

What are those concerns?	
Wildlife	42%
Buffer zones being increased and obeyed	34%
Scenery	29%
Pollution and its cleanup	27%
Reforestation	25%
Destruction of the forest	17%
Spraying	16%
Clearcutting	13%
Erosion	12%
Machines tearing up the land	8%
Snowmobiling trails	4%
Access to private logging	4%
Berry-picking	4%
Tourism	3%
Harvesting causing increased wind around cabin areas	1%
Serenity will be destroyed by harvesters	1%

*The percentages in this table do not add up to 100% because the majority of people surveyed had multiple answers to this question.

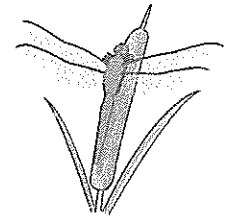
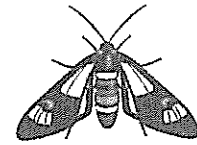


Table 2.1.4

Question 4. Are you aware of Citizens Forest Advisory Committee (CFAC) and The Western Newfoundland Model Forest (WNMF) and how they can help you?	
Yes (CFAC)	9%
No (CFAC)	91%
Yes (WNMF)	75%
No (WNMF)	25%



2.2 Discussion of Results

There were 77 surveys conducted and in order to assess the responses, each question will be looked at individually.

Question 1: Are you aware of Corner Brook Pulp and Paper Ltd's Five Year Timber Harvesting Plans for the Bonne Bay Pond area?

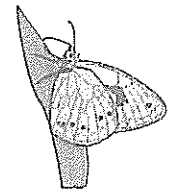
- 29% of those people surveyed had heard of the Five Year Operating Plan before. Many of the 71% that had never heard of the Plan, did realize there was harvesting in the area.

Question 2: Do you think that this harvesting may affect you? How?

- Out of the 77 people surveyed, 68% believed that the harvesting would affect them in some way.
- The five most frequent responses as to how the harvesting would affect them were
 - the destruction of scenery (35%)
 - wildlife (hunting/trapping, habitats) (35%)
 - snowmobiling (access to areas around Bonne Bay Pond) (29%)
 - the effects of cutting on fish (21%)
 - the effects of cutting too close to the pond affects their recreational activities (19%)
- Other responses were erosion, pollution, the destruction of hiking areas, and the effects on tourism

Question 3: Do you have any concerns pertaining to this plan and your cabin area?

- Out of the 77 people surveyed, 83% had concerns about the Timber Harvesting Plan for their area.
- When asked what those concerns were the five main responses were:
 - Wildlife (42%)
 - Buffer zones and their adherence (34%)
 - Scenery destruction (29%)
 - Pollution and its cleanup (27%)
 - Reforestation (25%)
- Other responses to this question were destruction of the forest, spraying, clearcutting, erosion, machines tearing up the land, snowmobiling trails, access to private logging, berry-picking, tourism, harvesting creating wind, and the destruction of serenity.



Question 4: Are you aware of Citizens Forest Advisory Committee (CFAC) and the Western Newfoundland Model Forest (WNMF) and how they can help you?

- Out of the 77 people surveyed only 9% were aware of CFAC, however, 75% of those surveyed were aware of the Western Newfoundland Model Forest.

Question 5&6: Would you like to have more information about these two organizations? Would you like to become a member of CFAC?

- Only 6 of the people surveyed were interested in joining CFAC:
 - Lloyd Pelley (785-2025)
 - James DuHart (613-836-5145)
 - David Quigley (783-2143)
 - Harvey Payne (785-2189)
 - Don Hoyles (634-2786)
 - Gerald Davis (632-5415)

3.0 Conclusion

From the people surveyed in the Bonne Bay Pond cabin areas, it appears that the majority of them believe they will be affected by the Five Year Timber Harvesting Plan and they have serious concerns about the environment and their recreational activities. Most of the people in that area had never heard of the Five Year Operating Plan for District 15 and were surprised at the size of the area and its close proximity to some of their cabins. Also, many of the cabin owners had never heard of CFAC and were relieved to hear that there was a group looking out for their interests with regards to the cutting and a number they could call to voice their concerns.



APPENDIX 1

Survey

Name: _____

Address: _____

Telephone: _____

1. Are you aware of Corner Brook Pulp and Paper Ltd's Five Year Timber Harvesting Plans for the Bonne Bay Pond area?

2. Do you think that this harvesting may affect you? How?

3. Do you have any concerns pertaining to this plan and your cabin area?

4. Are you aware of Citizens Forest Advisory Committee (CFAC) and the Western Newfoundland Model Forest (WNMF) and how they can help you?

5. Would you like to have more information about these two organizations?

6. Would you like to become a member of CFAC?

