

FOR DISPLAY ONLY

PLEASE DO NOT REMOVE

WESTERN NEWFOUNDLAND MODEL FOREST Inc.

**Domestic Wood Cutting Working Group
Summary of activities during the winter of 1996**

Prepared by:

Brent Humphries &
Ray Humber

April 26, 1996

6-501-005

LIST OF APPENDICES

- Appendix # 1. minutes of all Domestic Wood Cutting Working Group meetings held from January 18 to April 24, 1996
- Appendix # 2. summaries of all public meetings sponsored by the D.W.C.W.G.
- Appendix # 3. press releases issued on behalf of the D.W.C.W.G.
- Appendix # 4. summary of Annual Allowable Cut calculations for the North Shore Bay of Islands area
- Appendix # 5. Proposed Management Strategy for domestic cutting & all maps, posters, calculations and other related documentation

Background Information

Work this season was a continuation of the public consultation process started last year. At that time, the Domestic Wood Cutting Working Group (D.W.C.W.G) had hosted a series of public meetings on the South Shore of the Bay of Islands with the following objectives in mind:

- ▶ to provide the public with the results of domestic wood supply inventories for the areas around their communities, along with data on present demands and usage. These results indicated that wood supply shortages in the future were very likely with present cutting levels and practices.
- ▶ To give people a chance to comment on the domestic cutting situation and offer solutions for changes leading towards sustainability.

Initial meetings at all areas were basically a forum to present information and give people a chance to air their grievances. It was an opportunity to speak out against a system many felt removed from and powerless to change. However at later meetings, as better dialogue was established, people became more involved and began to offer constructive comments. These comments formed the basis of a document called the Proposed Management Strategy outlining changes to current cutting regulations and options for expanding the land base available for domestic use.

1995/96 Project Objectives

1. To continue to increase public awareness on issues associated with domestic wood cutting within the Model Forest, and to seek public input into future management options. The 1994/95 project developed and refined the following process to promote awareness and gain input through public meetings.
 - ▶ The first step is to gather information about the area in the form of updated mapping and forest inventory. This is done in conjunction with the Newfoundland Forest Service through field checks and use of their G.I.S database.
 - ▶ This data is then used to calculate Annual Allowable Cut figures, and comparisons are drawn to the present cutting situation.
 - ▶ This information is then presented to the public at meetings in the respective communities, hosted by the Model Forest. The situation is discussed and suggestions for positive changes are solicited from the public.

2. A preliminary draft of a Proposed Management Strategy for domestic cutting was compiled from the results of last years meetings. This document will be presented at follow-up meetings at Mt. Moriah, Benoits Cove, and Lark Hr. for discussion and any necessary revisions. At this time local representatives will be asked to join the Working Group to provide input into future planning efforts.
3. The same procedure outlined in 1 & 2 will be carried over to several locations on the North Shore with hopes of streamlining the process through experience gained on the South Shore.
4. The Public Awareness & Involvement Working Group held meetings this fall to discuss forest issues in general. Follow-up meetings were requested at Bonne Bay and Deer Lake with representatives from the Nfld Forest Service and Corner Brook Pulp & Paper available to answer questions. These meetings will be held to coincide with Domestic Wood Cutting issues.

Review of Activities for 1995/96

South Shore - Bay of Islands

The Proposed Management Strategy draft was discussed and revised (Appendix 4) at D.W.C.W.G. meetings early this winter. It was then presented at three meetings along the South Shore for further discussion. These meetings focused on taking the objectives of the draft strategy and refining them to better meet the needs of the public. Complaints such as frustration over inadequate enforcement by the NFLD. Forest Service, and perceived problems with Corner Brook Pulp & Paper harvesting practices were repeated. However, attitudes are changing and agreement has been reached on a number of issues.

These meetings concluded with both the public and the Working Group being able to sit down and rationally discuss the problems and issues pertaining to domestic wood cutting. As well, people are better aware of the potential shortages and the steps needed to better manage the resource for the future. Four local residents were chosen to represent the area in future meetings with the Model Forest.

North Shore - Bay of Islands

Due to the positive outcome of the consultation process on the South Shore, it was felt that a similar format would be used to deal with domestic cutting issues on the North Shore. The focus was broadened to invite discussion of other topics relating to use of the forest as well. Meetings were arranged for McIvers and Summerside, with dates, times and places advertised through newspapers, radio, and posters distributed through the area.

The turn out at both meetings was good with 67 residents in attendance at the McIvers meeting and 52 at Summerside. Both meetings started off with a short introduction about the Model Forest concept. The goals of sustainability and integrated resource management were explained briefly and the partners that make up the Model Forest outlined. Although there still seems to be a lack of understanding of what the Model Forest is all about, this round of meetings seems to be getting the message across.

Kevin Sutton gave presentations on the state of the forest resource in the Model Forest area. He outlined timber ownerships and problems with overcutting in general on Crown Lands. This prompted discussion of several issues, many of which have been heard at previous public meetings throughout this process. The recurring complaints are directed at the Newfoundland Forest Service and Corner Brook Pulp & Paper because of the perception of poor industrial harvesting practices and lack of concern for the environment.

Many of these complaints are based on past performance, and these meetings provide an opportunity for these agencies to inform people of the changes being made in regard to such topics as buffer zones and site disturbance. There are also misconceptions about management issues such as forest renewal through natural regeneration versus tree planting, and overcutting harvest quotas. People came to the meetings suspicious of industry and government, but are willing to listen, and interested in hearing about improvements in these areas. The open dialogue of these meetings seems to instill more willingness to accept these explanations, as opposed to hearing the official line from government and industry, which is probably easier to disregard.

On the South Shore it took several meetings to reach a point where progress could be made on the issues. The people needed to be convinced that the Model Forest was trying to involve them in constructive decision making, rather than being just another government agency looking to take something away or sneak in more regulations. Progress on the North Shore was much faster, with people apparently seeing some value in involvement with the Model Forest. This may be due to the fact that people have been following the progress of this working group through the press and by word of mouth. It may also be related to increasing public awareness of sustainability issues.

Model Forest in General

Local representatives were also selected from the North Shore. These people along with representatives from the South Shore and Bonne Bay area were invited to join the Domestic Wood Cutting Working Group. This Group met on April 24 to discuss progress to date, and reach agreement on proposed changes to regulations. The changes agreed to at the meeting were as follows:

- ◆ reduce Crown cutting permit quotas to 5 cords.
- ◆ sawlog quota of 250 fbm may be taken within the 5 cords annually without restrictions. However, in the case of need for larger volumes of sawlog material, there will be a cap of 6000 fbm, which may be taken over a 20 year period. The present quota of 2000 fbm annually will still apply. For example, someone could harvest 2000 fbm a year for three years, then his/her 6000 fbm quota would be filled.

All local representatives present agreed to be further involved in the public consultation process regarding the forest management Five Year Plan for District 15. A future meeting was scheduled for Wednesday, May 15, 1996 at the Model Forest boardroom to discuss the following issues:

- ◆ the permit requirements for obtaining 6000 fbm of sawlogs over 20 years. i.e., building permits, etc.
- ◆ discussion of the Five Year Plan, an explanation of what it is and the public consultation process involved in it's approval.
- ◆ sub-dividing Crown cutting blocks into more efficiently managed blocks

This type of involvement represents a significant change in how the public and government will make decisions in the future. It is a positive step towards public involvement in issues of sustainability.

Appendix # 1.

minutes of all Domestic Wood Cutting Working Group meetings held from
January 18 to April 24, 1996

DOMESTIC WOOD CUTTING WORKING GROUP

Meeting with Officials of Corner Brook Pulp & Paper Ltd.
January 18, 1996

The Domestic Wood Cutting Working Group was established to deal with concerns associated with the harvest of fuelwood and sawlogs by the general public. This has generally been viewed by forest managers as a haphazard activity that is hard to control and quantify.

Review of Activities to Date

1993 / 94 Budget - \$42,627.00

Objectives

1. To provide the four Development Associations within the Model Forest with funding to enable them to hire a person to prepare a brief on domestic cutting concerns, and suggestions for improvement or change in their respective areas.
2. To estimate volume and species of firewood and sawlogs cut annually in the Model Forest on C.B.P.P. and Crown limits.
3. To determine the number of households in the Model Forest area that are dependent on wood heat.
4. To determine location of domestic cutting in the Model Forest and obtain some appreciation for numbers of people involved in each location.
5. To communicate with cutters on site as to the Forest Service and C.B.P.P.'s cutting regulations and boundaries, etc.

Five technicians were hired, one by each of the Development Associations and another by the Model Forest directly. Two surveys were carried out that winter. The first was directed towards wood cutters encountered on both Crown and C.B.P.P. limits during the course of regular field trips. The second was directed towards the general population and was carried out by personal visits to 236 households. This second survey was a pilot for a provincial ENFOR survey done in conjunction with the Canadian Forest Service. It formed the basis of a report by Mr. Peter Trelawney.

These initiatives gathered a significant amount of the data about domestic cutting habits. For example, Trelawney's report indicates that approximately 45 % of the households outside Corner Brook depend on firewood for home heating. This illustrates the importance of the resource to rural areas where almost every second household burns wood. Of equal or greater importance to the statistics however, was the attention drawn to the issues, and the concerns of domestic cutters. That being, the state of the resource and the difficulties in the proper management of it.

1994 / 95 Budget - \$20,000.00

Objectives

1. Increase Public Awareness on Domestic Cutting in the Model Forest.
 - Prepare press release on results of 1993 / 94 study
 - Prepare presentation on results of last years work to be given at public meetings.

2. Educate domestic cutters on regulations
 - Complete and distribute Domestic Wood Cutting Pamphlet.
 - Inform domestic cutters on basic scaling to increase cutters ability to monitor volumes harvested.

3. Develop a Management Strategy for domestic wood cutting.
 - Prepare a domestic wood cutting strategy for the Corner Brook Municipal boundary as a pilot project. A second area is also considered.
 - Hold at least two Public Meetings to solicit input in preparation of strategies.

4. To examine the potential for self-regulation in the control of domestic harvesting practices.

5. Examine the potential to solicit funding from Human Resource Development Agreement to implement strategies developed.

Two technicians were rehired to carry out this years activities. The focus was on public meetings for Corner Brook and the South Shore of the Bay of Islands. This involved a detailed inventory of the area to determine the landbase for Annual Allowable Cut calculations. This information, along with age class distribution data revealed serious localized wood shortages in store for communities in the area. Sustainability would require permit quotas to drop from the present 10 cords per household to the following levels:

<u>Area</u>	<u>A.A.C</u>	<u># permits</u>	<u>sustainable quota</u>
Corner Brook	600 cords	262	2.3 cords/household
Benoits Cove	1000 cords	182	5.5 cords/household
Lark Harbour	250 cords	88	2.8 cords/household

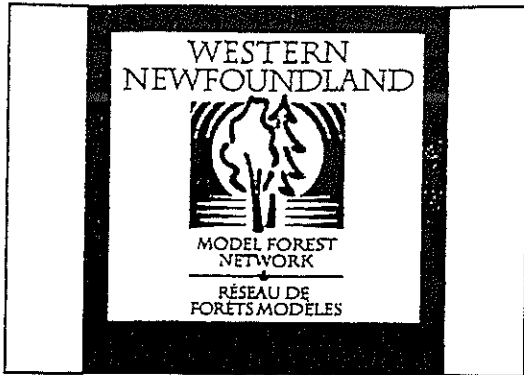
This information, along with the results of the previous years studies, were presented at a series of meetings in Lark Harbour, Benoits Cove, Mt Moriah, and Corner Brook. This provided a public forum to discuss concerns, and offer comments and suggestions on proposed management options. These meetings evoked strong emotions and criticisms as well, but also revealed an interest in better management for the future.

1995 / 96 Budget - \$20,000.00

At this time, there is a tentative list of objectives for this years project. This includes returning to the South Shore - Bay of Islands area to conclude last years work. A proposal was drafted at the request of the public, outlining elements of a management strategy, and Tom O'Keefe is in the process of approaching local people to form a committee to comment on it.

It was the intent to duplicate this entire process on the North Shore of the Bay of Islands, and possibly other areas within the Model Forest this year.

Review of the Proposed Management Strategy



Western Newfoundland Model Forest
89 West Valley Road
Corner Brook, Newfoundland
AH 2X4

Telephone: (709) 634-6383
(709) 634-5978
Facsimile: (709) 634-0255

MINUTES

W.N.M.F. Inc. Domestic Wood Cutting Working Group Meeting - Feb. 12, 1996
W.N.M.F. Boardroom, Corner Brook

Persons Attending

Mr. Louis MacDonald	- C.F.E.S.
Mr. Kevin Sutton	- NFLD Forest Service
Mr. Charles Gaulton	- NFLD Forest Service
Mr. Derek Brown	- City of Corner Brook
Mr. Matt Churchill	- C.B.P.P.
Mr. Brent Humphries	- W.N.M.F.
Ms. Joanne Smythe	- W.N.M.F.
Mr. Tom O'Keefe	- W.N.M.F.
Mr. Ray Humber	- W.N.M.F.

The objective of this meeting was to review the summary of the last meeting and the letter which was to be sent to Mr. Stu Weldon, plus a discussion about the pilot project. This was an informal, exploratory meeting and it was felt that it was unnecessary to involve all members of the Working Group.

Matt stressed that the pilot project was not separate from the Management Strategy for the South Shore. He suggested that Brent and Ray combine the pilot project with the "Elements of the Proposed Management Strategy" to present at the upcoming public meetings. He also said we should run through each element of the proposed management strategy with the people attending the public meetings.

The group reviewed the "Elements of a Proposed Management Strategy" which led to some

discussion.

- ▶ # 1- Separate A.A.C. calculations for each community along the South Shore. Kev felt that it could be implemented by N.F.S. if wanted.
- ▶ # 3- The item dealing with 10,000 F.B.M. once in a lifetime should be rewritten to state this amount of wood must be cumulative over a 3-4 years.
- ▶ # 4- The permits to cut wood now expires on March 31st. Kev agreed to check with Mr. Allan Masters to have this extended to June 30th. The group felt that this would alleviate the possibility of people duplicating the amount of wood they are permitted to cut on a yearly permit.

Ray would meet with Matt and Kerry Hutchings on Wednesday morning to try to identify land along the South Shore to run a pilot project.

Dates for public meetings were decided on, they are as follows:

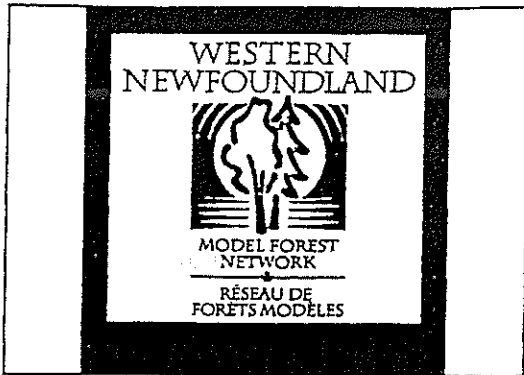
SOUTH SHORE

Thursday March 7th, 1996 / Tuesday March 12th, 1996 / Wednesday March 13th, 1996

NORTH SHORE

Wednesday March 20th, 1996 / Thursday March 21st, 1996 / Wednesday March 27th, 1996

Meeting adjourned at approximately 3:30pm. The next meeting of the Domestic Woodcutting Working Group will be held at 1:30 p.m. Tuesday, Feb 27, 1996 at the boardroom on the 3rd floor of the Herald building in Corner Brook.



Western Newfoundland Model Forest
89 West Valley Road
Corner Brook, Newfoundland
AH 2X4

Telephone: (709) 634-6383

(709) 634-5978

Facsimile: (709) 634-0255

MINUTES

W.N.M.F. Inc. Domestic Wood Cutting Working Group Meeting - Feb. 27, 1996
Herald Building Boardroom, Corner Brook

Persons Attending

Mr. Matt Churchill	- Corner Brook Pulp & Paper
Mr. Derek Brown	- City of Corner Brook
Mr. Dean Wheeler	- South Shore Dev. Assn.
Mr. Kevin Sutton	- NFLD Forest Service
Mr. Brent Humphries	- W.N.M.F.
Ms. Joanne Smythe	- W.N.M.F.
Mr. Tom O'Keefe	- W.N.M.F.
Mr. Ray Humber	- W.N.M.F.

Discussion of Proposed Management Strategy document

Matt suggested firming wording of the document to replace would, should, etc. with more direct words such as will or must. It was mentioned that this document was prepared as a discussion paper rather than a directive. No change was agreed to.

Matt requested that item #7 be revised to state that C.B.P.P. has agreed to turn over limits for domestic use. He also wanted the explanation of how it would be carried out to follow in #7 rather than attached in an appendix. He stated that there doesn't appear to be any area suitable for domestic use on the South Shore.

There was debate over where the Strategy applies, whether it is developed expressly for

the South Shore, or the entire Model Forest.

A.A.C. data for areas on the South shore should be condensed and attached to item #1 with further details in an appendix.

There was debate over what happens if the public rejects the proposed strategy. Do we walk away and say the people have spoken, or do we recommend our proposal to government for implementation. No agreement was reached.

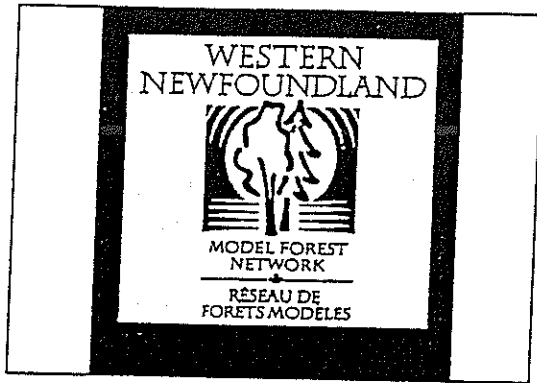
Upcoming public meetings

Dean spoke about the local committee formed in Lark Hr. concerned with community sustainability. It was agreed that Brent and Ray will meet with them before our meeting in Lark Hr.. Tom will contact Martin Von Mirbach to inform him of same.

Brent was chosen to present the Strategy document at the public meetings.

Preparation of the 5 Year Plan was mentioned. Kevin suggested that Brent and Ray may be able to assist in it's production. Implications to the Strategy was mentioned and there was agreement that it should be brought to the public's attention at the meetings.

There will be two meetings on the North Shore instead of three.



Western Newfoundland Model Forest
89 West Valley Road
Corner Brook, Newfoundland
AH 2X4

Telephone: (709) 634-6383
(709) 634-5978
Facsimile: (709) 634-0255

SUMMARY

Domestic Wood Cutting Working Group Meeting - April 24, 1996
Model Forest Boardroom

Committee Members Attending

Mr. Matt Churchill	- Corner Brook Pulp & Paper
Mr. Louis MacDonald	- C.F.E.S.
Mr. Kevin Sutton	- NFLD Forest Service
Mr. Chuck Gaulton	- NFLD Forest Service
Mr. Dean Wheeler	- B.O.I.S.S.D.A.
Mr. Brent Humphries	- W.N.M.F.
Mr. Tom O'Keefe	- W.N.M.F.
Mr. Ray Humber	- W.N.M.F.
Mr. Kevin Taylor	- Corner Brook
Mr. Leo Quilty	- South Shore - Bay of Islands
Mr. Tony Hickey	- South Shore - Bay of Islands
Mr. Murray Sheppard	- South Shore - Bay of Islands
Mr. Russell Park	- North Shore - Bay of Islands
Mr. Terry Hann	- North Shore - Bay of Islands
Mr. Leo Byrne	- North Shore - Bay of Islands
Mr. Derek Dennis	- Bonne Bay

This was the first meeting involving representatives from the local communities as committee members. Kevin opened the meeting and welcomed the new committee members to the group. He also stated that he needed advice regarding changes to quotas and regulations for new cutting permits to be issued in June of this year.

Russell asked why there were no representatives present from the McIvers - Coxs Cove area . Tom responded by saying that he had spoken with the Mayor of McIvers, who was trying to get someone on the committee. Tom will follow up to get representation for the area.

Brent then gave a brief presentation on the elements of the Proposed Management Strategy. The eight points of the strategy were then discussed to achieve consensus where possible.

In regard to managing community wood supplies separately, everyone agreed that it would better to have a standard quota rather than separate quotas for individual areas.

All members agreed to the following steps to work towards sustainability of the resource:

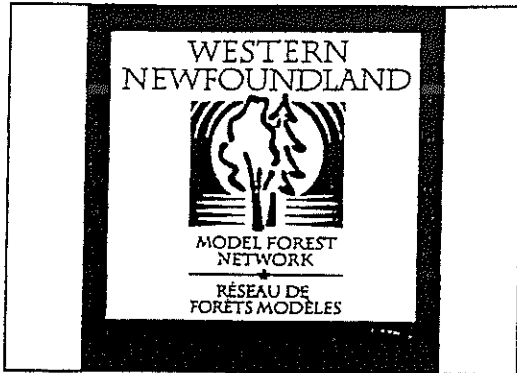
- ◆ reduce Crown Land cutting permit quotas to 5 cords.
- ◆ sawlog quota of 250 fbm may be taken within the 5 cords annually without restrictions. However, in the case of need for larger volumes of sawlog material, there will be a cap of 6000 fbm, which may be taken over a 20 year period. The present quota of 2000 fbm annually will still apply. For example, someone could harvest 2000 fbm a year for three years, then his 6000 fbm quota would be filled.

All local representatives present agreed to be further involved in the public consultation process regarding the forest management Five Year Plan for District 15. A future meeting was scheduled for Wednesday, May 15, 1996 at the Model Forest boardroom to discuss the following issues:

- ◆ the permit requirements for obtaining 6000 fbm of sawlogs over 20 years. i.e., building permits, etc.
- ◆ discussion of the Five Year Plan, an explanation of what it is and the public consultation process involved in it's approval.
- ◆ sub-dividing Crown cutting blocks into more efficiently managed blocks

Appendix # 2

summaries of all public meetings sponsored by the D.W.C.W.G.



Western Newfoundland Model Forest
89 West Valley Road
Corner Brook, Newfoundland
AH 2X4

Telephone: (709) 634-6383

(709) 634-5978

Facsimile: (709) 634-0255

SUMMARY

Domestic Wood Cutting Public Meeting - Mar. 7, 1996
Lark Harbour Community Hall

Resource Persons Attending

Mr. Matt Churchill	- Corner Brook Pulp & Paper
Mr. Dean Wheeler	- South Shore Dev. Assn.
Mr. Kevin Sutton	- NFLD Forest Service
Mr. Chuck Gaulton	- NFLD Forest Service
Mr. Brent Humphries	- W.N.M.F.
Mr. Tom O'Keefe	- W.N.M.F.
Mr. Ray Humber	- W.N.M.F.

There were approximately 30 local people present.

Tom opened the meeting and gave a brief outline of the role of the Model Forest.

The Proposed Management Strategy was circulated to those present. It was also circulated around the communities several days prior to the meeting, by Ray and Brent.

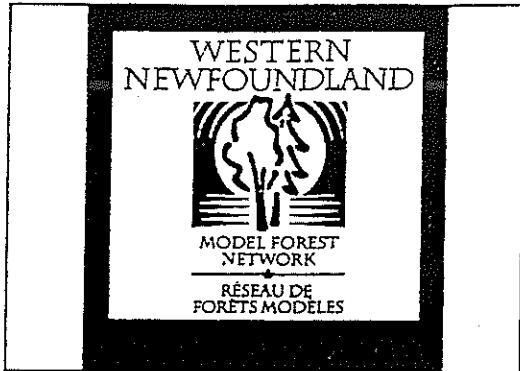
Brent presented the elements of the Strategy in point form with a series of overheads. Discussion of the plan was encouraged throughout the presentation.

Comments from the public

- ▶ Could the present cutting block boundaries be extended further south? Forest Service responded by saying the matter could be looked into.
- ▶ Why can't the public take dry wood from Corner Brook Pulp & Paper limits? Matt responded by saying that the company will not make it official policy because it leads to loss of green wood. However, there is no problem with people taking strictly dry wood.
- ▶ Concern over availability of sawlogs for lobster fishermen to replace gear and other needs associated with the fishery. Loss of gear in cases of ice or storms could require more lumber than usual. Producing a valid fishing licence could be justification of need. Discussion led to 300 fbm. to be adequate for maintenance of gear.
- ▶ Are there any alternative areas for people to cut? No, other than hardwood from C.B.P.P. limits.
- ▶ Lack of monitoring was mentioned. Kev replied that a new enforcement officer was in place and the # of charges were up.
- ▶ This presentation could be condensed into a few key points.

Items agreed to

- ▶ Firewood quota can be reduced to 5 cords.
- ▶ Annual sawlog limit of 300 fbm. outside of lifetime limit.
- ▶ Lifetime limit of 6000 fbm. a good idea, but lifetime should be changed to a set period of time such as 10, 15, or 20 years.
- ▶ Mr. Murray Sheppard (681-2039) was chosen to represent the area at future Domestic Woodcutting Working Group meetings.



Western Newfoundland Model Forest
89 West Valley Road
Corner Brook, Newfoundland
AH 2X4

Telephone: (709) 634-6383

(709) 634-5978

Facsimile: (709) 634-0255

SUMMARY

Domestic Wood Cutting Public Meeting - Mar. 11, 1996
Benoits Cove Community Hall

Resource Persons Attending

Mr. Matt Churchill	- Corner Brook Pulp & Paper
Mr. Kevin Sutton	- NFLD Forest Service
Mr. Fred Ryan	- NFLD Forest Service
Mr. Brent Humphries	- W.N.M.F.
Mr. Tom O'Keefe	- W.N.M.F.
Mr. Ray Humber	- W.N.M.F.

There were approximately 8 local people present.

This meeting followed the same format as the previous one in Lark Hr. Tom opened the meeting and gave a brief outline of the role of the Model Forest.

The Proposed Management Strategy was circulated to those present. It was also circulated around the communities several days prior to the meeting, by Ray.

Brent presented the elements of the Strategy in point form with a series of revised overheads. Discussion of the plan was encouraged throughout the presentation.

Comments from the public

- ▶ In response to item #1, management around communities. The comment was passed that it was fine to have different quotas for different communities as long as the quota matches the supply.
- ▶ Government created the wood supply shortage in Benois Cove by giving a few operators a large area to harvest commercially. This area would have been a good supply for domestics. Concern that these operators would eventually be given more wood currently available to domestic cutters.
- ▶ The public must realize there is a problem now, and agree to make changes for the future. Domestics have to share the blame with commercial operators for abuses in the past.
- ▶ Concern over continuing practice of large tops left in the woods.

Items agreed to

- ▶ Firewood quota can be reduced to 5.5 cords.
- ▶ The majority of people present agreed with a limit of 6000 fbm. over a period of 20 years with up to 150 - 300 fbm. allowed outside this limit annually.
- ▶ Change permit expiry date from March 31 to later in spring. (June 30)
- ▶ In regard to division of cutting blocks, it was felt that certain areas could be closed to cutting for protection of young timber, but they didn't want to be restricted as to where they could go in the rest of the area.
- ▶ Mr. Tony Hickey (789-3350) was chosen to represent the area at future Domestic Woodcutting Working Group meetings.



Western Newfoundland Model Forest
89 West Valley Road
Corner Brook, Newfoundland
A1H 2X4

Telephone: (709) 634-6383

(709) 634-5978

Facsimile: (709) 634-0255

SUMMARY

Domestic Wood Cutting Public Meeting - Mar. 12, 1996
Mt. Moriah - Lions Centre

Resource Persons Attending

Mr. Matt Churchill	- Corner Brook Pulp & Paper
Mr. Derek Brown	- City of Corner Brook
Mr. Kevin Sutton	- NFLD Forest Service
Mr. Chuck Gaulton	- NFLD Forest Service
Mr. Allan Masters	- NFLD Forest Service
Mr. Brent Humphries	- W.N.M.F.
Mr. Tom O'Keefe	- W.N.M.F.
Mr. Ray Humber	- W.N.M.F.
Ms. Joanne Smythe	- W.N.M.F.

There were approximately 12 local people present.

This meeting followed the same format as the previous ones. Tom opened the meeting and gave a brief outline of the role of the Model Forest.

The Proposed Management Strategy was circulated to those present. It was also circulated around the communities several days prior to the meeting.

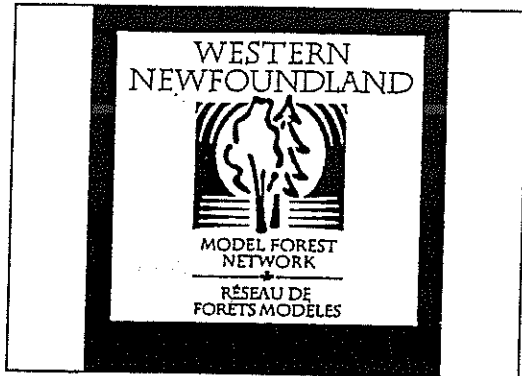
Brent presented the elements of the Strategy in point form with a series of overheads. Discussion of the plan was encouraged throughout the presentation.

Comments from the public

- ▶ In response to management around communities, the comment was made that people everywhere need roughly the same amount of wood, so why have different quotas.
- ▶ A local resident advised people present to be cautious of what was agreed to at this meeting. He was concerned about the eventual outcome of items agreed to.
- ▶ Domestic cutters are not the problem. Clearcutting and wasted wood by the paper companies is the problem. There were several comments concerning the public's perception of harmful practices carried out by C.B.P.P..
- ▶ Concern and anger over the fact that people from outside of Mt. Moriah are cutting in the local area. Some felt the area should be closed to outsiders.
- ▶ Lack of monitoring was mentioned. No enforcement of utilization problems. Kev responded by stating that the number of charges have increased.
- ▶ In response to item # 8, a couple of people present showed interest in gaining access to wood on the opposite side of Cooks Brook if C.B.P.P. agreed to it.

Items agreed to

- ▶ Firewood quota can be reduced to 5 cords on Crown land.
- ▶ A cap on the number of sawlogs an individual can cut is needed. The people present felt that construction of a new home was just cause to cut sawlogs, however there was no agreement to 6000 fbm.. Most agreed to 10,000, under the assumption that they should agree to a higher figure because it would be lowered by government anyway.
- ▶ Annual sawlog limit of 150 - 300 fbm. outside of lifetime limit is a good idea.
- ▶ Change permit expiry date from March 31 to later in spring. (June 30)
- ▶ Changing the size of cutting blocks seems like a reasonable idea, but people present said they would need more information on how it would be done. Could improve the possibility of silviculture treatments down the road.
- ▶ Mr. Leo Quilty (785-2568) and Mr. Wayne Bellows (785-2897) were chosen to represent the area at future Domestic Woodcutting Working Group meetings.



Western Newfoundland Model Forest
89 West Valley Road
Corner Brook, Newfoundland
AH 2X4

Telephone: (709) 634-6383
(709) 634-5978
Facsimile: (709) 634-0255

SUMMARY

Domestic Wood Cutting Public Meeting - Mar. 21, 1996
McIvers - Community Hall

Resource Persons Attending

Mr. Matt Churchill	- Corner Brook Pulp & Paper
Mr. Kerry Hutchings	- Corner Brook Pulp & Paper
Mr. Kevin Sutton	- NFLD Forest Service
Mr. Tom O'Keefe	- W.N.M.F.
Mr. Ray Humber	- W.N.M.F.
Ms. Joanne Smythe	- W.N.M.F.

There were approximately 67 local people present.

The meeting was opened by a brief comment from Mayor Dave White of McIvers, who then passed it over to Tom O'Keefe to facilitate the meeting. Tom gave an overview of the purpose, and agenda of the nights meeting.

Joanne gave a presentation outlining the goals and structure of the Model Forest.

Kevin talked about the state of the resource on both Crown and Company limits, and reviewed the results the domestic wood cutting survey carried out by the working group in conjunction with the Canadian Forest Service. This was followed by a general discussion period, some of the issues brought up were:

► Where does the Model Forest obtain it's funding? It was pointed out that it comes from

the Federal government.

- ▶ Large amounts of wood left after the Company harvests, which is not allowed to be taken by the public. Kevin replied that while there is a considerable amount of wood left, most of it is birch or dead wood.
- ▶ Some one brought up a policy whereby a penalty one dollar per piece of wood is charged against commercial cutters for wood left on cutovers. Kevin replied that there isn't such a policy. It could be confused with C.B.P.P internal utilization penalties.
- ▶ A.T.V. use on wetlands should be allowed. They are not as bad as heavy machinery.
- ▶ The paper companies influence government policy making.
- ▶ Commercial cutters are not leaving buffer zones around waterbodies. Kevin replied that this is incorrect, there is a 20 meter uncut buffer to be left as of 1994 on all ponds, brooks, and streams that show up on a 1:50,000 topo map. An example of skidders in Wild Cove Pond (Baie Verte Peninsula) was cited by one individual.
- ▶ Can a person get a permit to cut wood from the council within the community boundary? It was pointed out that council could only give a permit if they owned the land. Most land is either owned by the Crown or Company.
- ▶ A few people didn't agree with the Company spraying residual hardwoods after logging. Matt stated it was a silviculture practice. It is done on very limited areas.
- ▶ A couple of people said that in the past the McIvers - Coxs Cove area was overcut by the Company. Kevin noted that most of the wood in the area has regenerated and is 30-40 years old.
- ▶ In response to the question of how much wood does an average household need, one person said six cords, and another said ten cords in a windy area.
- ▶ There was a question from one of C.B.P.P.'s thinners about leaving hardwoods in thinning operations, would this new company policy (1995) continue? Yes, it is expected to continue.

Who pays for thinning operations? It is cost shared between government and industry, Last year it was a 50/50 cost share ratio.

- ▶ Discussion of cutting on Company limits, it was pointed out that the Company was willing to make land available if a suitable piece could be found. The MF agreed to discuss it with the Company and get back to the people. One person said to leave things as they were, but the majority agreed with us contacting the Company.

- ▶ A reserve should be established around the coastline for domestic cutting only. Suggestions of three, five, and ten miles were made, but there was unanimous agreement that three miles was sufficient. Reference was made to the old three mile limit, Kevin said it hasn't legally existed for years.

In response to a request from Tom for ways to better manage the forest, the following points were made:

- ▶ The NFS should better regulate paper companies and commercial loggers.
- ▶ A few people said that herbicide spraying should be stopped.
- ▶ The paper companies policy on domestic cutting was outlined. The company will allow the cutting of hardwoods.
- ▶ There was no response to questions of other values in the forest.
- ▶ No response to offers of involvement in either the Five Year Plan or the MF committees in general.

The meeting adjourned at 9:40



MODEL FOREST
NETWORK

RÉSEAU DE
FORÊTS MODÈLES

Forest Issues Public Meeting
Summerside, North Shore Bay of Islands
March 27, 1996

This was the second Forest Issues meeting held on the North Shore under the auspices of the Public Awareness and Involvement Working Group and the Domestic Wood Cutting Working Group. In attendance were 52 local residents including the following resource people:

Resource People present included:

Kevin Sutton (NFS)	Tom O'Keefe (WNMF)	Maureen Ivany (NFS)
Matt Churchill (CBPP)	Ray Humber (WNMF)	Fred Ryan (NFS)
Joanne Smyth (WNMF)	Brent Humphries (WNMF)	Chuck Gaulton (NFS)
Alfred Ryan (NFS)	Marilyn Young (WNMF)	Kerry Hutchings (CBPP)
Bruce Armstrong (CBPP)		

This meeting began with an overview by Joanne Smyth of the Model Forest, its objectives and goals. No comments or questions from the audience ensued. Then a presentation of a survey depicting the state of the resource was provided by Kevin Sutton of the Newfoundland Forest Service. Much discussion ensued resulting in the following comments:

- ⇒ Concern that figures for CBPP depicted in the survey were distorted
- ⇒ Not as much productive forest land on Crown land as stated
- ⇒ Domestic woodcutters (common man) never caused wood shortage or hurt the forest
- ⇒ CBPP leaving wood in the woods (poor utilization).

Response that it was mostly birch and dry wood left behind. Matt spoke about wood volumes and Allowable Annual Cuts with regards to the company and how much they plan to cut. He agreed that some wood may be left behind but that the companies (contractors) are being constantly monitored by NFS.

- ⇒ Model Forest should have had these meetings four years ago and public not involved with the Model Forest.. **Response** that it is definitely not too late. The process that is put in place now will carry over into the future.
- ⇒ Question rose whether public will be cut back while companies cut more.
- ⇒ Domestics not allowed to take birch off CBPP limits. **Response** by CBPP that this is incorrect.
- ⇒ Confusion over regulations company (CBPP) has in place with regards to domestic cutting
- ⇒ Agreed that average needed by domestics to heat their home would be four or five cords not the 7 to 8 as some people do imply.
- ⇒ Reid lot should be given back to the people, not feasible for company. **Response** - CBPP and Crown are looking at areas on Company limits for domestic woodcutting.
- ⇒ The 3-mile limit should be reinstated.
- ⇒ In relation to snowmobiles, trails and cabins, questions rose if MF will construct trails and if the MF will have any effect on cabin owners. **Response:** Model Forest is not a regulatory body but interested that all value groups have say in forest use and activity.

Appendix # 3.

press releases issued on behalf of the D.W.C.W.G.

SOUTH SHORE

Wood cutters agree limited wood should be cut

Domestic wood cutters on the South Shore of the Bay of Islands agree there is a reduction needed in the amount of wood to be cut in order to protect future wood supplies.

That was the decision reached at three public meetings organized by the Western Newfoundland Model Forest in Lark Harbour, Benoit's Cove and Mount Moriah. The meetings are being held to involve the public in having a say about managing the forest.

The meetings were a follow-up to similar ones held last winter when the Model Forest drew attention to the fact that wood was being over cut on Crown land in areas along the South Shore. At that time, people gave their ideas and asked the Model Forest to come up with suggestions on what should be done. Some ideas for a management strategy were put together and submitted to the public in the current round of public meetings.

People agreed that domestic wood cutting permits be limited to about five cords instead of the current 10. That could include up to 300 board feet of saw logs but any more saw logs would require justification such as house construction. Saw logs for special purposes would have a limit, for example, an individual could only cut saw logs once over a 10 or 20-year period. At two community meetings, it was agreed 6,000 board feet should be the limit, while at the other, people felt they needed 10,000.

Five cords is not enough fire wood for some people, a release from the Model Forest stated. However, if they could get that amount off Crown land they could cut the rest on Comer Brook Pulp and Paper timber limits. The paper company will give people permits to cut hardwood off its holdings and

will also ask them to pick up dead wood that is going to waste if people do not misuse the opportunity by cutting good green wood that the company needs.

The paper company, the release further states, is also willing to look at the possibility of making other stands of wood they do not need available for domestic wood cutting. One of the problems in doing this is finding a way to monitor and control it.

Another issue that came up at the public meetings was the idea of changing the cutting season so that permits expire on June 30 instead of the current March 31. It was also thought it might be a good idea to look at changing the size of cutting blocks on Crown land for better control and silviculture improvements. However, a final decision was not made.

It was also pointed out the new regulations and management ideas would not work unless there was good enforcement by the Newfoundland Forest Service.

As at other meetings, there was concern expressed about some of the harvesting practices of the paper companies. A representative of the paper company explained the company has made many improvements over the years and continues to improve.

While the domestic wood cutting working group of the Model Forest is putting together a management strategy for wood cutting, it does not make or enforce regulations itself. The ideas will have to be presented to the appropriate government department before there can be any changes.

The next round of the domestic wood cutting meetings will be held on the North Shore in McIvers Thursday, March 21, and in Summerside March 27.

Company may make land available to wood cutters

MCIVERS — Corner Brook Pulp and Paper is considering making some of its property available to domestic wood cutters.

The company is discussing the issue with the Western Newfoundland Model Forest Corporation, which has promised to inform local woodcutters of any progress.

George VanDusen, manager of

the company's woodlands operations, confirmed the company is considering the measure.

The Model Forest Corporation is holding a series of meetings on the issue of domestic cutting throughout the Bay of Islands.

At a meeting sponsored by the corporation in McIvers recently, many local residents had complaints about the unavailability of

wood for domestic use.

Some said that commercial harvesters often leave large amounts of wood behind them. They said it wouldn't go to waste if domestic cutters could get access to it.

In written report on the meeting, the Model Forest Corporation said the paper company will give permits to remove hardwood from their lands. It said the company is

also trying to make softwood doesn't use available to cutters.

Kevin Sutton of Newfoundland Forest Service's the supply of wood for domestic cutting on Crown lands is tight. But he said there is an excess hardwood on company limits that is made available to domestic cutters. He also said there is opportunity to get dead softwood.

Model Forest brings meetings to south shore

CORNER BROOK — Domestic woodcutters on the south shore of the Bay of Islands say a reduction is needed in the amount of wood cut.

That was the decision reached at three recent public meetings organized by the Western Newfoundland Model Forest in Lark Harbour, Benoit's Cove and Mount Moriah.

The meetings were held to involve the public about managing the province's forest.

Participants agreed domestic wood cutting permits be limited to about five cords instead of the current ten.

This could include up to 300 board feet of sawlogs, but any more sawlogs would require justification such as house construction.

Sawlogs for such special purposes would have a limit. For example, an individual could only cut sawlogs once over a ten or 20-year period.

At two community meetings, it was agreed 6,000 board feet should be the limit, while at another people felt they needed 10,000.

Some people felt five cords would not be enough. However, if that amount could be cut off Crown land they could cut the rest on Corner Brook Pulp and Paper Limits.

The paper company will give people permits to cut hardwood off the holdings. They will also allow cutters to pick up dead wood that is going to waste as long as people do not misuse that opportunity by cutting good green wood the company needs.

The paper company is also willing to look at the possibility of making other stands of wood they do not need available for domestic wood cutting.

But one of the problems in doing this is finding a way to monitor and control it.

Another issue that came up at the public meeting was the idea of changing the cutting season so that permits expire on June 30 instead of the current March 31.

Participants also thought it might be good to change the size of cutting blocks on Crown land for better control and silviculture improvements. However, a final decision was not made.

It was pointed out new regulations and management ideas would not work unless there was good enforcement by the Newfoundland Forest Service.

The next round of the domestic wood cutting meetings will be held in McIvers on March 21 and in Summerside on March 27.

PRESSRELEASE

Western Newfoundland Model Forest • 89 West Valley Road • Corner Brook, NF A2H 2X4 • (709) 634-6383 • Fax: (709) 634-0255

For Immediate Release

Date: March 28, 1996
Contact: Marilyn L. Young
Phone: (709) 634-6383
Fax: (709) 634-0255

North Shore Residents Get Answers

Summerside, NF—"If you have a question, then an answer can be expected tonight," was how one local resident viewed a Forest Issues public consultation meeting held here on Wednesday evening. This was after a lengthy discussion on forest use which saw representatives from the Newfoundland Forest Service and the Corner Brook Pulp and Paper Company answer a series of enquiries by those in attendance.

The meeting, sponsored by the Western Newfoundland Model Forest, drew 52 locals who were very vocal about their concerns in the use and management of the forest.

After hearing an overview of the Model Forest by Joanne Smyth, Integrated Resource Management Planner and a presentation by Kevin Sutton of the Newfoundland Forest Service on a state of the resource survey conducted by the four local development associations, an open discussion took place.

Here concerns expressed ranged from the harvesting practices of the paper company to unavailability of domestic wood, from the need for better management by the paper company and the Crown to more enforcement of regulations that are in place to protect the resource. It was pointed out that CBPP already allows the extraction of birch and other hardwoods from its limits along with dead softwood. The company is now in discussions with the Model Forest and is looking at making some addition land on the North Shore available to local woodcutters.

As in previous forest issue consultations held throughout the Model Forest, those at the meeting expressed similar concerns heard at these which was that there was too much wood left behind after clearcutting takes place, that the paper company disallows domestic wood cutters to take wood off their land, and the perception that the paper company is taking too much wood.

When queried on what they would like, residents voiced five items. These included that more Crown land be made available for domestic wood cutters, that better management was important, that the concept of individual blocks be explored, that there be more jobs, and there be more enforcement.

Tom O'Keefe, meeting facilitator, asked if the community wanted to have representation at its committee meetings. It was agreed that representatives from the North Shore be placed on the Domestic Wood Cutting Working Group. Three people, Terry Hann, Russell Park, and Leo Byrne were then selected to sit on the working group.

Overall, the group felt that the meeting was worthwhile and that the Model Forest should come back for further discussions. Meanwhile, the group was informed that the Model Forest is planning to hold another series of public consultation sessions throughout the Model Forest area. These are being held to provide the public an opportunity to have input into forest management plans which include the development of the 5-year operating plan for District 15 under the Newfoundland Forest Service. These will take place throughout April and early May.

Forest Issues Discussed

Sixty-seven people from the North Shore of the Bay of Islands turned out to a meeting in McIver's last week to discuss forest issues. Organized by the Western Newfoundland Model Forest, the meeting is one of a series to involve the public in developing a forest management plan. Resource people were present from the Model Forest, Corner Brook Pulp and Paper Ltd and the Newfoundland Forest Service. At the meeting held on March 21, local participants, express concerns about the present use of the forest and recommended some improvements.

Mayor David White of McIver's opened the meeting and welcomed the group. Tom O'Keefe, a meeting facilitator with the Model Forest, chaired the two hour session.

Joanne Smyth, the Model Forest Planner, gave a gave a brief presentation outlining the goals and structure of the Model Forest. She said, "A plan is being develop that aims to consider all values people have for the forest. An effort is being made to include the public in this planning. One of the goals is to continue to use the forest resource to meet peoples needs".

Kevin Sutton, Newfoundland Forest Service, then gave an overview of the state of the resource. He said domestic cutting is important to many Newfoundlanders and an effort is being made to continue to meet those needs. He pointed out that the supply of wood in this area for domestic cutting on crown land is tight. However, he pointed out there is an excess of hardwood on company limits that is made available to domestic cutters and there is also sometimes the opportunity to get dead softwood.

The discussion that followed included a number of complaints about use of the forest. These included: large amounts of wood are left behind after commercial harvesting that would not go to waste if domestic cutters could get it, mechanical harvesting is often destructive to the environment, companies get away with things domestic woodcutters cannot and they have bigger influence on government policies, wood is being cut too close to waterways and chemical spraying is destructive and dangerous.

It was pointed out that some of the things being complained about did happen in the past, but there have been a lot of improvements. For instance, on both company limits and crown land there is now a requirement for twenty metre buffer next to waterways. While there is considerable amounts of wood left on cut overs much of it is birch or dead softwood. Companies will give permits to remove hardwood from their land. An attempt is also being made to make softwood, that is not used by the company, available to domestic cutters. Also the public is now being invited to have input into the harvesting plans for company and crown land and other long terms plans for management of the forest.

During the discussion it was pointed out that the Corner Brook Pulp and Paper Ltd is willing to make some land available for domestic cutting if a suitable piece could be found. The Model Forest representatives agreed to discuss this further with CBPP and get back to the people.

People at the meeting suggested that land along the coast should be reserved for domestic cutting. It was agreed by members of the public that a three mile reserve would be adequate.

While values other than harvesting were brought up, such as recreational use, there was little interest in these issues. The group was invited to appoint a representative to the Model Forest Domestic Woodcutting Working Group, as had been done on the South Shore, but none volunteered. It was also pointed out that if they wanted to become involved in the development of harvesting and other plans they would be welcome. Commenting on the meeting, Meeting Facilitator Tom O'Keefe pointed out, "It is not unusual for people to refrain from getting involved at the first meeting. Involvement usually happens after they have had a chance to lean more about a group and what is to be done."

The next in the series of meetings to discuss forest issues will be held in the community hall at Summerside on Wednesday, March 27 at 7:30 p.m.

Appendix # 4.

summary of Annual Allowable Cut calculations for the North Shore Bay of Islands area

ANNUAL ALLOWABLE CUT SUMMARY

NORTH SHORE - BAY OF ISLANDS

AREA	A.A.C.	# PERMITS	PERMIT QUOTA
CROWN			
GILLAMS *	1460 m ³	114	12.8 m ³ (5.6 cords)
HUGHES BROOK	440 m ³	38	12.0 m ³ (5.1 cords)
C.B.P.P.			
COX'S COVE	4400 m ³	N/A	N/A
McIVERS	1600 m ³	N/A	N/A

* INCLUDES COMMERCIAL DRAIN

Appendix # 5.

Proposed Management Strategy for domestic cutting
&
all maps, posters, calculations and other related documentation

Proposed Domestic Woodcutting Management Strategy

DRAFT

For discussion purposes only

Partners:

- Corner Brook Pulp & Paper Ltd.
- Newfoundland Forest Service
- City of Corner Brook
- Center for Forest & Environmental Studies
- Community based Domestic Cutting Groups (future)
- Bay of Islands-South Shore Development Association
- North Shore-Bay of Islands Development Association
- Humber Valley Development Association
- Bonne Bay Development Association

Introduction

During the winter of 1995, the Domestic Woodcutting Working Group of the Western Newfoundland Model Forest held a series of public meetings in the Corner Brook - South Shore Bay of Islands area to discuss concerns about domestic cutting. There were good turnouts at all meetings indicating that this was a subject of interest to many people. Presentations outlined wood supply and demand figures, and the seriousness of future wood shortages if the situation continues without efforts to conserve and better manage this important resource.

These meetings also gave local residents an opportunity to voice their concerns, and any suggestions to improve cutting practices and regulations. Key points brought up at these discussions were noted and at the end of the process, the people present at the meetings gave the Working Group the job of preparing a workable plan to improve and better manage domestic wood cutting. The following suggestions were drawn up from ideas presented and discussed at the meetings. Please review them and come to the next round of public meetings to give your advice and opinions.

Elements of a Proposed Management Strategy for Domestic Sawlog and Fuelwood Harvesting

1. The Newfoundland Forest Service should manage domestic cutting areas around communities separately and calculate Annual Allowable Cut (A.A.C.) figures accordingly. The present method is to arrive at one A.A.C. figure for all Crown Land in the District, thereby permitting serious overcutting in smaller areas around communities while the District as a whole is within the A.A.C. limits. While this means there is still wood available throughout the district, it is of limited value to people if they have to travel great distances

to get it.

HOW MUCH WOOD CAN WE SAFELY CUT ON CROWN LAND ?

Area	Wood available per year	No. of permits	a safe cut
Corner Brook	600 cords	262	2.3 cds/household
Benoits Cove	1000 cords	182	5.5 cds/household
Outer Bay of Islands	250 cords	88	2.8 cds/household

2. Reductions should be made to domestic cutting permit quotas for Crown Land. Discussions at public meetings indicate that the average household relying on wood as a primary source of heat needs between 5 - 8 cords of firewood annually depending on such factors as species used, type of stove, insulation, etc.. However this amount still exceeds a safe allowable cut for most areas of Crown Land in the study area. Permit quotas must be reduced considerably and people directed to get firewood from Corner Brook Pulp & Paper cutovers to cover their needs. C.B.P.P. has indicated that they are receptive to changing their policy on domestic cutting if there is some form of monitoring of the situation.

3. The past and current regulations have allowed permit holders to harvest certain quantities of sawlog material annually without justification of need for the lumber. This has resulted in certain individuals consistently cutting large numbers of sawlogs every year, and in some cases overcutting quotas due to limited enforcement. Another problem relates to individuals getting permits for friends or relatives to allow the individual to cut more logs for himself under these permits. All these factors in combination lead to faster depletion of the resource and poor utilization in the rush to get these logs. Suggestions to better manage this situation include:

- The N.F.S has to maintain accurate records of both sawlog and fuelwood volumes harvested annually by permit holders. Foot board measure (F.B.M.) or board foot estimates for sawlogs should come from field checks, accurate sawmill returns and permit returns.
- The practice of placing permit numbers on sawlogs should be expanded to require that logs cut under each permit be piled separately to facilitate easier scaling by the Forest Service.
- Sawlog quotas greater than 150 - 300 F.B.M. will require the permit applicant to justify need for the lumber by means of a building permit issued by the appropriate municipality.
- Individuals would be allowed to harvest a maximum number of board feet of lumber in

their life time. This lifetime limit may be set at 6,000 F.B.M. For example, this would mean that an individual with a building permit could cut 2000 F.B.M. each year for 3 years and then his record with the Forest Service would state that the quota was filled. This lifetime limit may be back dated to 1993/94 when the Forest Service reinstated permit returns, starting everyone off with a clean slate may not solve the problem.

- In response to complaints at meetings last year, areas such as the Cooks Brook railbed where logs are stockpiled until spring, tops associated with the piled logs should be marked and piled next to the logs. This would enable the N.F.S. to easily check for proper utilization. Once checked, the fuelwood could be taken home if desired.

4. The present cutting season is year round and permits expire on March 31. The majority of cutting in Western NFLD takes place from mid-January until late April depending on snow conditions. This means that cutters have to renew their permits during their cutting activities, which may require a trip to Corner Brook. A solution may be to change the expiry date to later in the spring. There is also the possibility of limiting the cutting season to a three or four month period during the winter months which would make monitoring much easier.

5. Corner Brook Pulp & Paper should better publicize their domestic fuelwood cutting policy to make people better aware of options for obtaining fuelwood in areas other than Crown domestic cutting blocks.

6. Strategies must be developed to allow domestic cutters to access residual softwood from C.B.P.P. cutovers once they have finished logging. This includes wood left on the ground and standing residual pockets of sub-merchantable or inaccessible wood not harvested by the company. There has been some agreement to this in principle by company officials, if it is done under supervision to prevent abuse of these privileges. Such a monitoring initiative could arise from the local wood cutting committees discussed earlier and/or with help from the Model Forest.

7. The size of cutting blocks must be examined. Blocks should be smaller to direct more people into specific areas that need to be cut. Other areas such as blocks of younger timber should be temporarily closed to cutting until the wood matures. This type of management will result in better use of all wood in harvesting areas, reduced highgrading, and more effective monitoring. This issue will be looked at in the upcoming Five Year Plan being developed by the Newfoundland Forest Service and C.B.P.P. Ltd.

8. C.B.P.P. has agreed in principle to turning over certain areas of forested land for domestic use. There have been areas identified on the North Shore of the Bay of Islands, however the Working Group has been unable to locate any areas on the South Shore that have been acceptable to the Company. Any areas turned over for domestic use would have to be controlled and monitored to prevent access by domestics into stands viable for company operations. The following is an outline of how such an exchange would be implemented.

Corner Brook Pulp & Paper Community Exchange

Objective:

This project aims to delineate and make available an area of forest land for properly managed, domestic harvest of firewood and sawlogs. This would be an area of Corner Brook Pulp & Paper limits close to communities, where domestics have previously been forbidden to cut. The areas outlined cannot be easily harvested by C.B.P.P. due to operational constraints such as transportation difficulties, low merchantable volumes, steep slopes, etc.. This proposal would help to relieve pressure on Crown cutting blocks and also provide legitimate sources of wood to communities with little or no Crown land nearby. Such an initiative would have to be regulated and closely monitored to ensure proper management.

The following is a list of suggestions for setting up such a project.

- There could be a "user pay" system with a fixed nominal permit fee in combination with stumpage fees for firewood (\$/m³), and sawlogs (\$/fbm)
- Permit Conditions should be drawn up to clearly state cutting regulations and payment procedures with emphasis on infractions. This must be explained fully at time of permit purchase.
- The area should be sub-divided into either individual cutting blocks or localized cutting areas to enable easier monitoring. Once an area is cut and properly cleaned up, then another area is opened.
- Intensive monitoring throughout the season on a daily basis is necessary. Model Forest technicians must be on site to direct cutters to cutting areas, monitor utilization, and scale wood for payment. Enforcement, in conjunction with the Company, will result from on-site monitoring.

Benefits to Local Cutters:

1. Better management of wood supply and increased land base will provide a more secure source of firewood and sawlogs for the future.
2. Access to wood on nearby C.B.P.P. limits will reduce the cost of transporting wood to homes. It could also eliminate the need for pick-up trucks or trailers if the wood can be hauled directly home by snowmobile.

3. The pilot project will provide a visible demonstration of industry cooperation for better management alternatives, and will help to promote awareness of forest issues and public stewardship.

Benefits to Corner Brook Pulp & Paper:

This project will provide an excellent opportunity for C.B.P.P. to foster goodwill with the general public and domestic cutters in particular. It can be accomplished at little cost to the company in terms of wood supply because the areas involved will not be harvested anyway, and has the following benefits:

- The Company will have the opportunity to show appreciation for the needs and lifestyles of local people. This could go a long way to improve public perception, which has not always been positive.
- It is an opportunity for the Company to educate the public as to the cost of maintaining a wood supply for the mill. Also, although the Company recognizes the needs of the public and is agreeable to providing access to wood which the mill cannot harvest, it must maintain the integrity of forest areas necessary for its economic survival and prosperity. Such approaches could gradually cause a shift in attitudes about cutting illegally on Company limits.
- It is a known fact that the Company loses a significant volume of softwood through indiscriminate, illegal domestic cutting. This project provides an opportunity to establish and test a system to enforce domestic cutting regulations on Company limits. It might also help direct this illegal cut to areas where it can be regulated and not affect Company wood supplies.

Revised - Mar. 4, 1996

Proposed Domestic Woodcutting Management Strategy

PROBLEMS

1. Limited amount of forest land available for domestic cutting near communities.
2. Increasing demand for firewood and sawlogs by the public.
3. Limited regulation and monitoring in the past has put a strain on the resource.

A new approach is needed to insure better management and a fair share for everyone.

Strategy elements for discussion

1. The Newfoundland Forest Service should manage domestic cutting areas on a community by community basis rather than on the district as a whole. This could mean different quotas for different areas depending on local wood supply.
2. Reductions should be made to domestic cutting permit quotas for Crown Land.
3. Sawlog quotas be issued for set amounts over long term periods, (i.e. 6000 fbm over 20 years), with minimum amount allowed annually outside this limit (250 fbm). Cutters will be required to explain need for large volumes of sawlogs.
4. Change expiry date of cutting permits to later in the spring.
5. Corner Brook Pulp & Paper should better publicize their domestic firewood cutting policy to make people better aware of the availability of firewood from their limits.
6. Find ways to allow people to take softwood left on C.B.P.P. cutovers after the company has finished logging.
7. Change the size of Crown cutting blocks and try to schedule areas for domestic cutting to better manage it.
8. Reach agreements with C.B.P.P. to have certain areas of Company land turned over to the Crown for domestic cutting areas. These areas may be managed under different strategies, with more intensive monitoring and regulation.

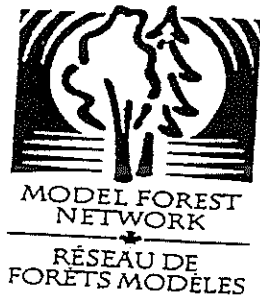
HOW MUCH WOOD CAN WE SAFELY CUT ON CROWN LAND ?

Area	Wood available per year	No. of permits	cords per household
Corner Brook	600 cords	262	2.3
Benoits Cove	1000 cords	182	5.5
Outer Bay of Islands	250 cords	88	2.8
Gilliams	640 cords	114	5.6
Hughes Brook	190 cords	38	5.1

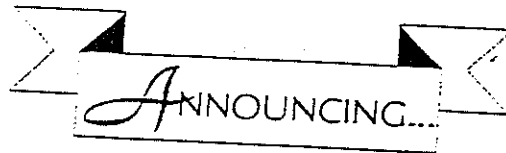
Providing:

- ◆ No one is cutting without permits
- ◆ No illegal sale of firewood
- ◆ Oldest stands of wood are cut first with younger wood left to mature

WESTERN NEWFOUNDLAND MODEL FOREST



COMMUNITY FOREST TALK



....a second meeting

As a follow up to a meeting held in Birchy Head before Christmas, the Western Newfoundland Model Forest is holding a second meeting in the Bonne Bay Region. Resource people will be present to answer questions. They will represent:

Gros Morne National Park
Corner Brook Pulp and Paper
Newfoundland Forest Service

The public is welcome to attend this meetings and discuss any issues related to the forest.

Remember people have many different uses for the forest including wood harvesting, trapping, snaring, fishing, snowmobiling, hiking, canoeing, source of water supply, a place to take pictures, etc.

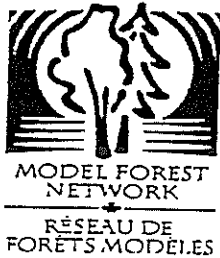
Come and have a say about how land, water, trees, wildlife and plants are now used and how they should be used and protected in the future.

Place: BIRCHY HEAD RECREATION CENTRE

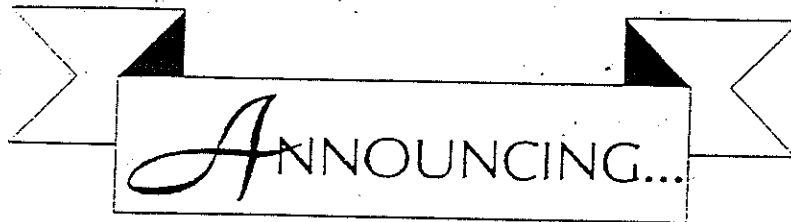
Time: 7:00 P.M. WEDNESDAY, FEBRUARY 14.

Sponsored by:
Western Newfoundland Model Forest
in cooperation with
Bonne Bay Development Association

WESTERN NEWFOUNDLAND MODEL FOREST



COMMUNITY FOREST TALK



...a second meeting

As a follow up to a meeting held in Deer Lake in December, the Western Newfoundland Model Forest is holding a second meeting. Resource people will be present to answer questions. They will represent:

Corner Brook Pulp and Paper
Newfoundland Forest Service

The public is welcome to attend this meeting and discuss any issues related to the forest.

Come and have a say about how land, water, trees, wildlife and plants are now used and how they should be used and protected in the future.

Place: ROMAN CATHOLIC PARISH HALL, POPULAR RD., DEER LAKE

Time: 7:30 P.M. TUESDAY, MARCH 5

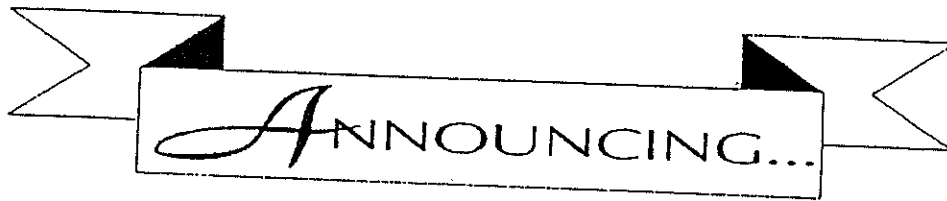
Sponsored by:
Western Newfoundland Model Forest
in co-operation with
Humber Valley Development Association

WESTERN NEWFOUNDLAND MODEL FOREST



MODEL FOREST
NETWORK
RÉSEAU DE
FORÊTS MODÈLES

PUBLIC MEETING



A meeting on

ISSUES RELATED TO THE FOREST

Do you use the forest for cutting wood, trapping animals, snowmobiling, hiking, fishing, photography, camping, boating, a water supply, etc? Are you concerned about land use?